



DOSS

CRIME SC

NE DO

CRIME SCENE DO NOT CROSS

2

2023-2024

WWW.TECHNOMAXX.COM

DO NOT C



About Technomaxx

We Technomaxx are manufactures and compilers of fingerprint, forensic and crime scene investigation products. We are serving various law enforcement agencies in India. In addition to a wide variety of kits to choose, our kits can be customised to fit any department's needs.

To us, innovation spurs creativity.. and creativity spurs people who are energetic and eager to please.

Go ahead.. give us a try and watch us meet your needs creatively - and at the same time serve you better, faster and more cost effectively.

If it fits your schedule , give us a call for presentation / demonstration of our product range. Let us prove we are the best people in the business!

Our Strengths

Inventory

Customization!

We endorse

Make In India

Our Global Partners





FINGERPRINT INVESTIGATION :

Latent Print Processing	1
Finger Print Taking	15
Fingerprint Kits	24
Forensic Light Sources	28
Impression Evidence Kits	35
Visual Aid / Magnifiers	42

CSI / SOC KITS :

Semen Detection Kit	49
Blood Detection Kit	51
DNA / Sexual Assault Evidence Collection Kit	56
Explosive Detection Kit	59
Gun Shot Detection Kit	61
Narcotics Detection Kit	62
Aero Chamber Sniffer	63
Ferro Trace Kit	64
Bullet Hole Testing Kit	65
SOC Sketch & Measuring Kit	67
Bullet Trajectory Kit	68
Advance Laser Trajectory Kit	69
Number Restoration Kit	70
Evidence Collection & Packing Kit	71
General Investigation Kit	77
Arson Investigation Kits	78
Crime Scene Cordoning Kit	79
Investigation Officer Kit	81
Crime Scene Ruler & Markers	82
Photo Documentation Kit	83
Crime Scene Illumination System	84
Crime Scene Search Light	85
Techno Portable Lab	86
CSI / SOC Kit Carrying Cases	89
Mobile CSI / Forensic Vehicle	93

Latent Fingerprint Development



Fingerprint Basic Powders

There's nothing standard about our basic powders! These powders are perfect for any variety of non-porous surfaces such as glass, finished wood, and plastic. Use with our Fiberglass / Ostrich Feather / Marabou Feather Brush, these powders, unlike many others available in the market today, does not create a "dust clouds" when being applied. Our Dual-purpose powder is a must for every fingerprint expert. This unique powder has unusual capability to develop black on light colored surfaces or a silver on dark surfaces.

Basic Powders Available in:

Black / Deep Black	50 Gm
Grey / Silver Grey	50 Gm
White	50 Gm
Dual Purpose	50 Gm



Black



White



Grey



Dual Use



Fingerprint Magnetic Powders

Our magnetic powders get the job done perfectly on rough, grained, or porous surfaces that otherwise become heavily contaminated with standard powder. Recommended when dusting for latent prints on horizontal areas versus vertical areas, such as walls, fences, etc., as well as any non-ferrous (ability to hold a magnetic charge) evidence surface. Experience less background fill, produce cleaner prints, and you can put away those paper towels since you will have less clean up.

Magnetic Powders Available in:

Black / Deep Black	50 Gm
Grey / Silver Grey	50 Gm
White	50 Gm
Dual Purpose	50 Gm



Black



White



Grey



Dual Use

The Fluorescent powders are to be used on textured surfaces, which can sometime be problematic with basic non-fluorescent powders. Fluorescent powders work best when used in conjunction with UV lights. They also work especially well on the multicolored surfaces.

Fingerprint Fluorscent Powders

Perfect for dusting latent prints on rough, contaminated, and / or multi-colored surfaces. The ability of the finest particles, provides for brilliant fluorescing. Experience less mess while using less powder. These powders are to be used with our Feather Brushes.

Fluorescent Powders Available in:

Red	50 Gm
Green	50 Gm
Yellow	50 Gm
Orange	50 Gm



Yellow



Green



Orange



Red



Fingerprint Fluorescent Magnetic Powders

Ideally used on porous, grained, and/or multi-colored horizontal surfaces. Provides double the advantages by having the two concepts combined. There is less mess, enhanced visibility of latent prints, less background fill, and cleaner prints.

Fluorescent Magnetic Powders Available in:

Red	50 Gm
Green	50 Gm
Yellow	50 Gm
Orange	50 Gm



Yellow



Green



Orange



Red

Special Purpose Fingerprint Powders

Latent Print Processing



Silver / Aluminium

This silver/aluminium is recommended for use on glass, metallic, highly varnished surfaces, hard rubber, leather, safes or blue steel guns. Many experts prefer silver/aluminium powder due to its high sensitivity for developing latent prints on so many different surfaces. Lifts developed with silver/aluminium powder must be placed on a black backing card for optimal contrast.



Gold

Like silver/aluminium this metallic gold powder is also very special to produce solid, high-definition, high-density fingerprint ridge lines. Because of their metallic base both silver/aluminium and gold metallic provide strong reflectance for easy photography and can be used with a standard fingerprint brush, such as the marabou feather or ostrich feather or even fiber glass.



Dual Orange Fluorescent

Dual orange fluorescent produces brilliant fluorescence when exposed to a forensic light source, it also provide contrast under regular lighting similar to our standard dual powder. Powder should be applied with a feather brush. Black or white backing card may be used to provide a sharp contrast with the resulting ridge detail.

**Contact for
Bulk Packing**



500 Gm

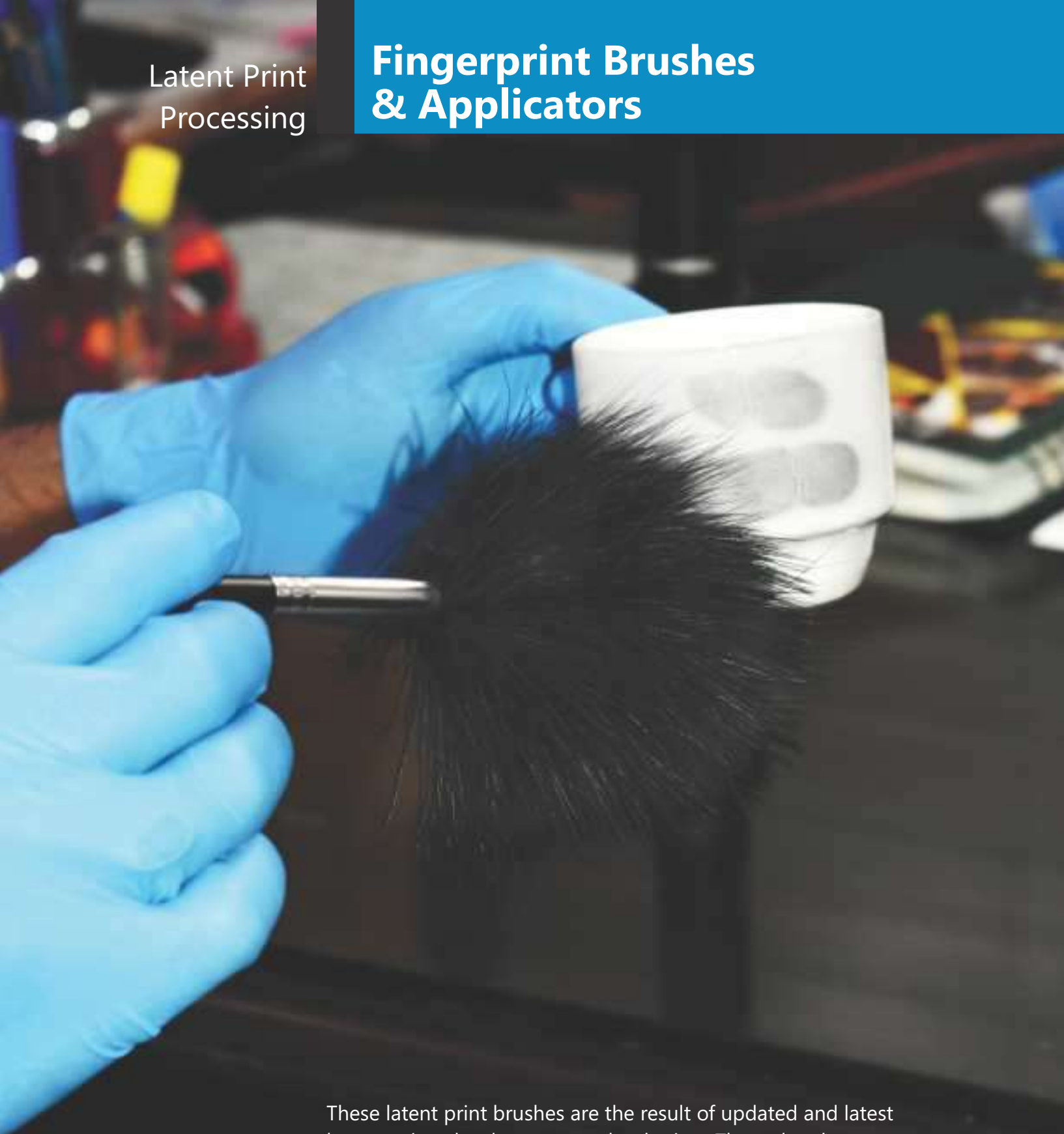


1 Kg



2 Kg

Fingerprint Brushes & Applicators



These latent print brushes are the result of updated and latest latent print development technologies. These brushes are unequaled because feathers are naturally smooth and feature a low friction quality. In addition fibers / feathers are corrosion and moisture resistant ensuring the finest brush even in extremely high humidity. These brushes allow the user to quickly change powder colors simply by shaking the brush free of initial powder.

Marabou Feather Brush



Our marabou feather duster is the best among Indian finger print duster family. Superb for use as a primary or secondary applicator of all latent print powders (basic & fluorescent). Especially suited for large area applications. Each brush comes with an individual transparent tube and cap for storage when not in use.

Ostrich Feather Finger Print Brush

We provide you with real deal in brushes. Our Ostrich feather brush works best in INDIAN conditions. We use the original imported Ostrich feathers. This Ostrich feather brushes can be used with any normal and fluorescent powders. They do not damage or scratch latent prints. Provided to you in an individual transparent tube and cap for storage.



All Purpose Finger Print Brush

This is a standard powder applicator for basic and fluorescent powders. It is very economical. We provide you with real deal in brushes. One can use our all purpose brush / applicator to apply or drop normal and fluorescent powders.



Fiberglass Filament Finger Print Brush

One of the finest brushes in the market for developing latent fingerprints. Specially selected fiberglass filaments are formed into a soft brush cluster that retains powder. Does not damage or scratch latent prints. It is an excellent high quality brush and is very expensive. Also provided to you in an individual transparent tube and cap for storage.

Finger Print Brush Magnetic Applicator

Magnetic applicators are designed for use with magnetic powder. The powder will form a cluster at the end of the applicator with a plastic leaf on it, then used as a brush to develop the latent print. Simply place the unused portion back in the jar when you have done. Easy to use, and not as messy as standard fingerprint powder. To be used on non-metallic surfaces.



FINGER PRINT LIFTING MATERIAL



Like peanut butter on the roof of your mouth (and just as annoying to the criminal) simply lift on virtually any surface with our tape. If you are serious about adhesion, proper clarity, no streaks or air bubbles at a great value.

Fingerprint Lifting Tape

You don't have to be a weightlifter to do lifting with our tapes. Our fingerprint lifting tape is made specially for lifting developed latent fingerprints. It is very strong and elastic, and will adapt easily on textured, convex and concave surfaces. The tape is crystal clear. Comes in a protective case.

Available in: 1 inch, 2 inch, 3 inch, 4 inch



Fingerprint Lifter Black, White and Transparent

Simply peel the protective backing sheet to expose a clear sticky back lifting tab, then place the tab on the powdered print, lift it, and fold down on the pre-attached backing card flap. The backing card flaps are made from heavy-duty black, white, transparent sheets and comes permanently attached to the flap lifter.

Available in: 1.5inch x2inch, 2 inch x 4 inch, 4 inch x 4 inch

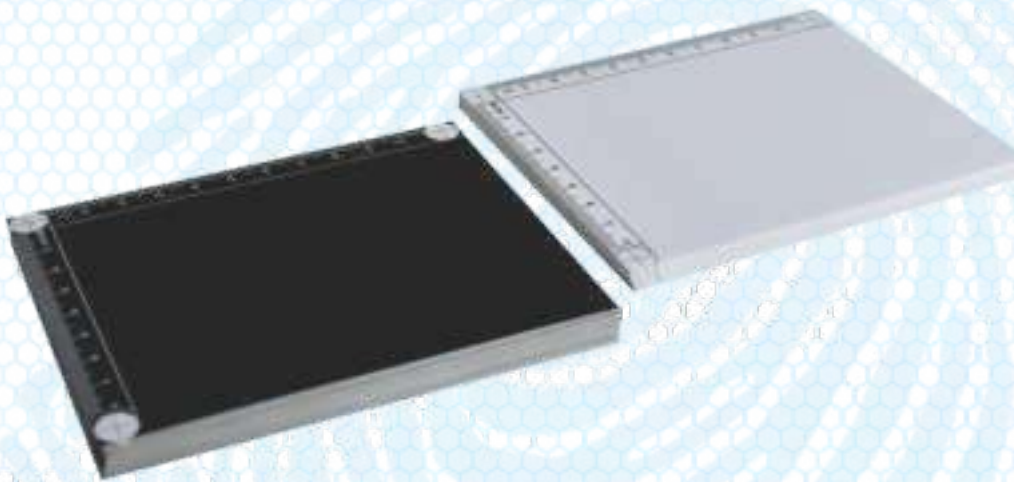


Finger Print Backing Cards Black & White

Prints down, these cards are the only choices to ensure you have the best quality to identify and preserve your evidence. Complete with record maintenance sheet on back and feature a glossy white or black side for mounting your lifts.

Available in : 4 inch x 4 inch, 6 inch x 6 inch, A4 size

Gel lifters / tape are made of high quality elastic sheets of rubber with a low adhesive gelatin layer on one side. Its advantage are high elasticity and low tack. It's elasticity allows latent pickup on uneven or curved surfaces.



Gel Lifter

Simply peel the protective backing sheet to expose a clear sticky back lifting tab, then place the tab on the powdered print, lift it, and fold down on the pre-attached backing card flap. The backing card flaps are made from heavy-duty black, white, transparent sheets and comes permanently attached to the flap lifter.

Available in: 5"x7", 3"x5"



SMALL PARTICLE REAGENT

FOR DEVELOPING PRINTS

Small particle reagent technique is a means to develop latent fingerprints on wet, non-porous surfaces including glass, plastic, metals and adhesive sides of tape. The method is based on the adherence of fine particles of treating solution to the oily or fatty components of latent fingerprint residues.

Small particle reagent technique is convenient, efficient and cost-effective method to develop latent fingerprints on wide range of substrates of forensic importance.

Available Variants : Dark, Light & Fluorescent



PROCESS :

- Shake container well before use.
- If being used outside during rain, shelter the area to be treated from direct rain fall.
- Spray area to be examined starting at the top and working downwards.
- If signs of fingerprint development appear, continue spraying just above the relevant area until there is no more build up to the deposit.
- As solution drain away, powder will be left adhering to the surface.
- Remove excess powder from developed fingerprints by spraying water gently above the developed fingerprints with a second spray of clean water.
- The water will drain away carrying with it the excess powder.
- Do not spray the developed fingerprints directly as this may damage them.
- Allow surface to dry. The developed fingerprints are very easily get damaged. These prints are visible through naked eye. They either should be photographed immediately or can be lifted through fingerprint lifting tape.

Safety Requirements :

1. Keep away from children.
2. Eye protection should be worn if there is any risk of splashing solution into the eyes.
3. Nitrile gloves and face mask are also advisable to prevent allergic skin reaction.
4. If any chemical or liquid is swallowed, seek medical attention immediately.
5. If any chemical and liquid is splashed into the eyes, wash it out with cold running water and seek medical attention.
6. If any chemical is spilled onto the skin brush it off while dry with a tissue or a cloth.



Iodine Kit

Iodine processing is used to develop prints that contain oils and fatty deposits. Iodine has been shown to be very useful on fresh prints found on porous surfaces such as paper and cardboard. Iodine fumes will produce a temporary yellow-brown print. Prints must be fixed immediately after processing because they will begin to fade. Always remember to photograph the developed prints.

Item Description	Specifications
Iodine Crystal	20 Gm
Iodine Fuming Gun	Glass Model
Glass Wool	Small Jar
Calcium Chloride	Small Jar
Transfer Plates	Silver (2"x2")
Plate Polisher	Reagent
Iodine Fixative	100 ml
Carrying Case	Plastic

Ninhydrin Kit and Spray

Ninhydrin is used for the development of latent fingerprint on porous surfaces such as paper, cardboard, and currency. This makes it an excellent choice for using on bad checks, letters, and suspected drug records. Ninhydrin produces a colored image ranging from orange to purple. Development can be accelerated by heat and humidifying the evidence.



Item Description	Specifications
Ninhydrin Crystal	2 Gm
Ninhydrin Solution	100 ml
Brush	Set of Two
Aerosol Sprayer	Plastic
Hot Air Blower	Electric
Carrying Case	Hard

Cyanoacrylate Fuming Gun Kit

This is a portable, hand held heat generator that instantly develops fingerprints on non-porous surfaces, including plastic, metal, enamel, varnished wood surfaces, cellophane, foils, plastic-coated papers and glass. Fitted with cartridges of ethyl Cyanoacrylate, also known as super glue. The wand heats the cartridge, which emits a vapor for fuming surface for latent prints. As a result latent print form a hard white substance, which can subsequently by dusted with fingerprint powder before lifting.



Item description	Specification	Quantity
Heat Generator Fuming	Gun	01
Protective Head Cover	Cover	01
Butane Fuel Can	Small Bottle	01
Cartridge Extraction Tool	Steel	01
Cyanoacrylate	Cartridge Pack of 10	01
Carrying Case with Formed Inserts	Hard Molded Type	01



Economy Fuming Chamber

This lightweight, portable and disposable fuming system is ideal for use in the field or in the office. Designed for use incorporating all fuming procedures, especially well suited for use with the Cyano-process latent print developing system. The simple six-piece frame snaps together in seconds into its sturdy base, creating the framework for the preprinted disposable fuming bag. The crystal-clear fuming bags allow constant monitoring of the fuming process and eliminate messy cleanup simply throw the bag away when done.

Item Description

Heavy-duty base, 10" x 10" x 20" box shaped fuming area, 15 Preprinted disposable fuming bags, Sturdy, lightweight aluminum frame, Four evidence clips, Carrying Pouch

Portable Hard Fuming Chamber

This portable fuming chamber is a cyanoacrylate development chamber designed with field use in mind. Constructed of shatter-resistant transparent Acrylic, the unit is made to disassemble into flat sheets and fit into a tough, fabric / nylon carrying case. Total portability means easy, at-the-crime- scene usage. The chamber is easily assembled in less than five minutes, no tools required.

Includes

Fuming Chamber, Shelf & Hangers , Fabric / Nylon Carrying Case
Evidence Clips

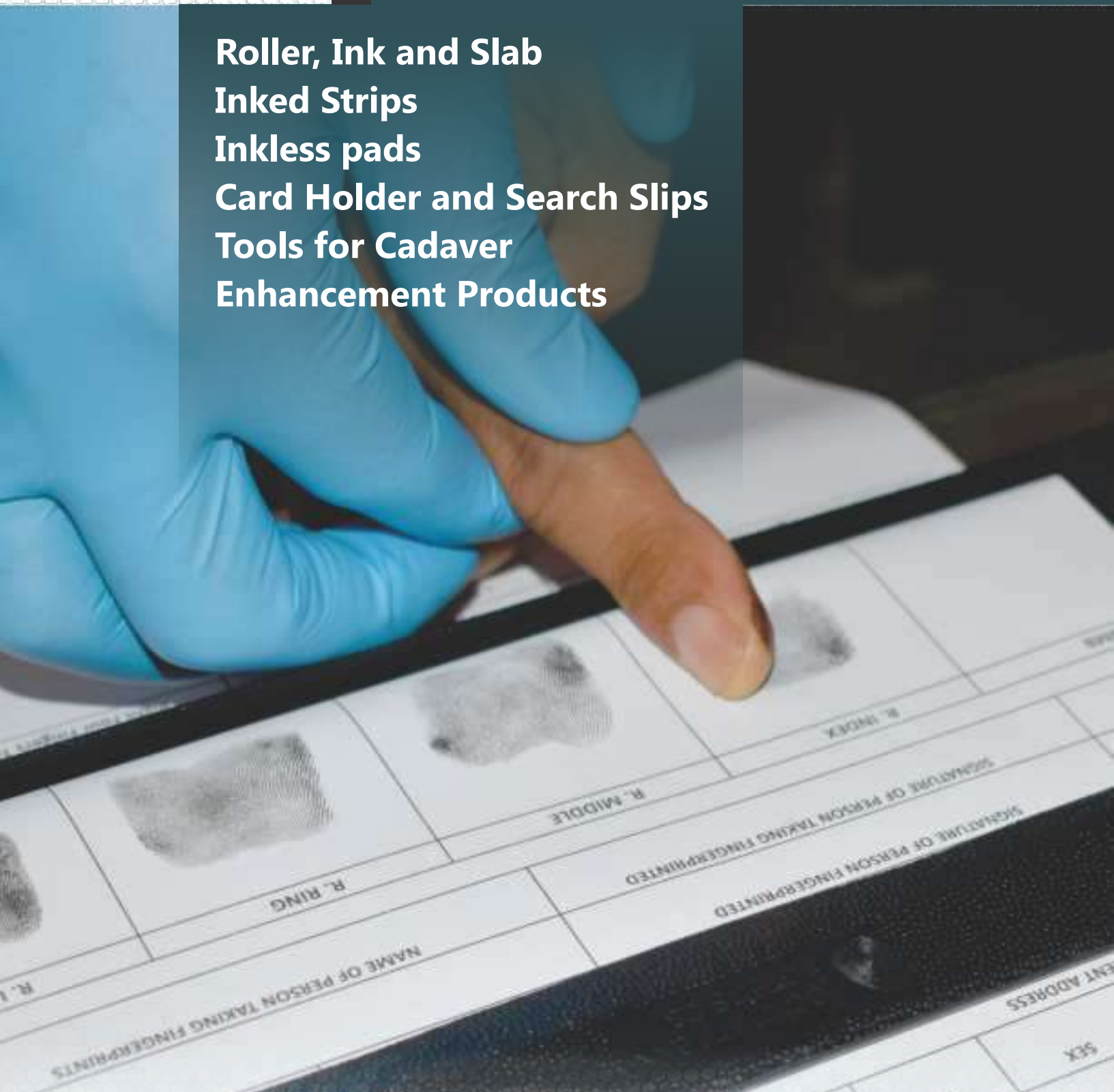


Fuming Hot Box

Our slim Fuming Hot Box is set at just the right temperature to make sure you get your prints without fear of noxious fumes or unusable evidence. Includes 10 disposable aluminum reservoirs.



**Roller, Ink and Slab
Inked Strips
Inkless pads
Card Holder and Search Slips
Tools for Cadaver
Enhancement Products**



Our Fingerprinting Products are designed to meet most demanding requirements of fingerprint experts. From ideal ink, roller, slab to our superb inkless pads manufactured under most stringent quality and performance standards.



FINGERPRINTING ROLLERS

Constructed specifically for use in taking rolled fingerprints, our standard fingerprint rollers have a heavy duty steel frame and a firm acrylic handle. Rollers are of medium-soft composition, ensuring an even distribution of ink. Use with our ink for a fast, efficient and clean fingerprinting outfit. Repeated cleaning with solvents will not damage this roller. It is specifically designed to ergonomically maintain maximum comfort and balance for the operator who is tirelessly preparing for inked impressions with minimal effort. **Fingerprinting rollers are also available in sturdy plastic body frame.** Both frame designs prevent the rollers from touching the inking table when not in use.

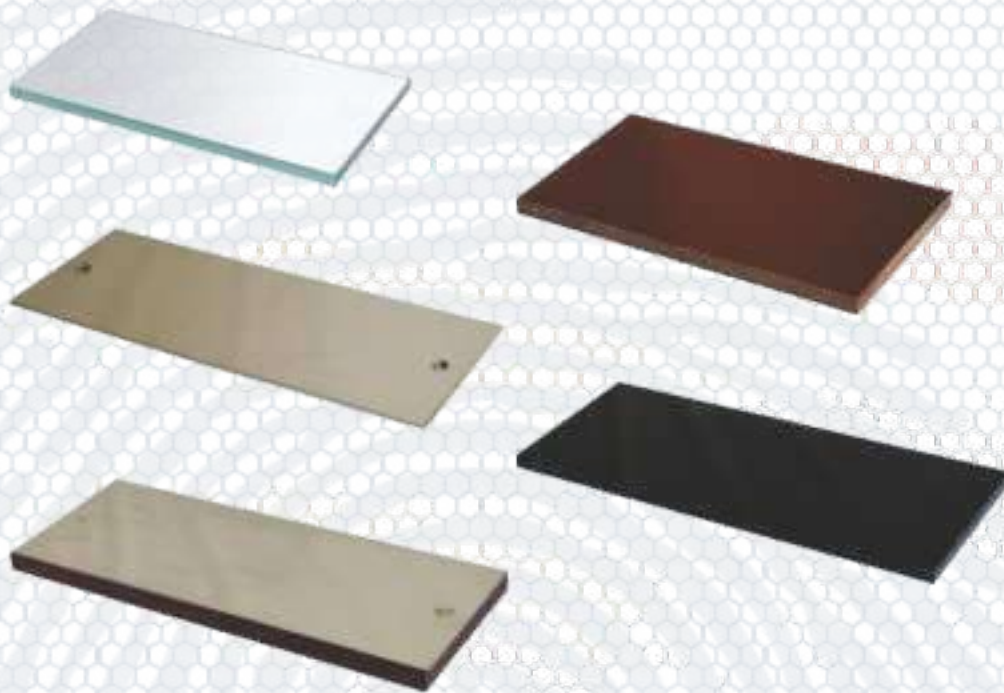
Cylindrical Rollers Available in : 2", 4"
Concave Roller Available in : 2"



FINGERPRINTING INK

Do not downplay the role of fingerprinting ink. We are using the best black ink as complimented by most of the finger print expert all over INDIA, to be as black as coal and glide like velvet. Its quick-dry formula provides excellent ridge detail. This ink paste is quick drying on fingerprint cards, but not on the ink slab. It is not affected by extreme temperature changes. Using ink to roll fingerprints is very economical, and one tube of ink will produce many hundreds of rolled fingerprints. Our ink is specially made paste-ink for use with our rollers and slabs. **Now also available in easy to use Jar packing.**

Available in: 100 gm tube.



FINGERPRINTING SLABS

Our slabs are ideal surfaces for rolling out smooth and even coats of ink. Made of steel / glass neatly, mounted models are tightly fixed on wood base. This high quality, super smooth inking slabs provide optimum versatility and portability. **Slabs are also available with non skid rubber feet.**

Available in :

Steel	4"x10" & 5"x12"
Steel Mounted on wood	4"x10" & 5"x12"
Glass	2"x3", 4"x6"
Fiber Glass	4"x10" & 5"x12"
Acrylic	4"x10" & 5"x12"

Customized sizes also available.



PRE-INKED STRIPS

Simply peel back the covering on these pre-inked strips and you're ready to start taking fingerprints. They have just the right amount of ink to get great prints with minimum mess, and the ink washes off easily. Size: 1" x 5", 3"x10"



Best for Examinations



FINGERPRINTING INKLESS ROUND PAD

We have engineered premium inkless inkpads. These inkpads replace all other fingerprint pads on the market including the roller, slab, ink and strip method. Simply touch your finger on the surface of the pad, and then roll the print for a jet-black, crisp clear image that instantly dries. Rub your fingers together... and poof! the ink wipes off. **These pads are ideal choice for single digit fingerprinting like during examinations.** Available in 2" diameter size.

FINGERPRINTING INKLESS RECTANGULAR PAD

4"x 6"

Print Capacity Minimum 12,000 Imprints Per Pad

Properties

- Micro reticulated thermoplastic pad
- Non toxic, non messy formula & harmless to skin.
- Makes a crisp, clear imprint, never smear, dries instantly

Output

- Fast, Perfect & High Contrast Impression
- Permanent black prints
- Best for scanning into AFIS.

Weight

- Light Weight & easy to handle



6"x 8"

Print Capacity

- Minimum 22,000 Imprints Per Pad

Properties

- Micro reticulated thermoplastic pad
- Non toxic, non messy formula & harmless to skin.
- Makes a crisp, clear imprint, never smear, dries instantly
- Leaves a little ink on the fingers tips & does not dry out if pad is left open.

Output

- Fast, Perfect & High Contrast Impression
- Permanent black prints
- Best for scanning into AFIS.

Speciality

BEST FOR FULL PALM PRINTS

PALM PRINT PAD





Cadaver Finger Print Record Slip Pad

These 8" x 11/16" Postmortem Fingerprint Record Cards are specifically designed for use with our cadaver spoon. Our cards are printed in black on thick card sheet, which quickly absorbs fingerprint ink without smudging or smearing

Cadaver Finger Straightener

This postmortem tool of ours is specially designed to straighten clenched fingers of the deceased. Each of tool feature different sized hole openings to accommodate different finger sizes. Tools are made of steel.

Cadaver Finger Print Spoon

Our postmortem record strip holder (cadaver spoon) is made to hold up to 2 inch card strips for successful fingerprinting of the deceased. Designed specifically, it greatly simplify the task of inking immobilized fingers. They permit rapid, efficient and uniform finger inking. A rugged, nickeloid finish assures years of service.

Available in: Plastic Model, Steel Model

Finger Print Elimination Pad

Each pad contains 20 / 50 / 100 elimination print cards which measure 7" x 33/8". Each card is printed on the backside with case number, date, and all pertinent information concerning the subject being fingerprinted.



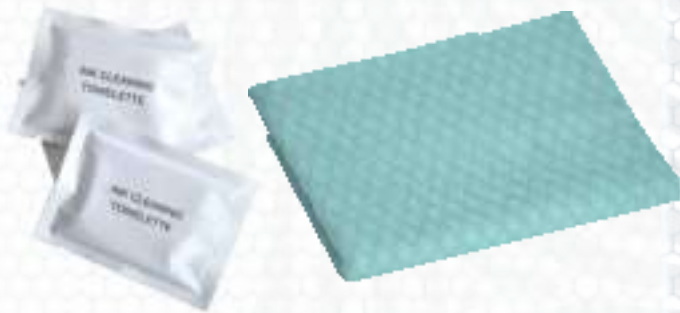


Finger Print Search Slips

Each pad contains 20 / 50 / 100 fingerprint slips, which measure 210mmx297mm / A4 size.
This product can be customised as per end user’s need.

Fingerprint Ink Cleaners

Ideal for field and office use, these towelettes are individual, disposable ink-cleaning towels, saturated with ink solvent.



if you are using ink roller slab method to record fingerprints this wipe is must to wipe off ink stains.

Available in:

Ink Cleaning Wipes Pack of Ten (10)



CARD HOLDER New

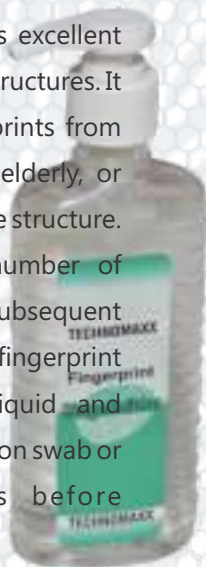
Built exceptionally strong and rigid, our fingerprint cardholder is made of a sturdy, high-grade, non-skid fabric / metal / wood. No more smeared prints as the cards are held firmly in place. Cardholder is available in three models. We can also include screws for permanent mounting to a desk or counter top.

Available in:

Economy Model with Metal Base 8" x 3.5"
Plastic Injection molded material 10" x 3 7/8" x 1"

Ridge Enhancer

Our unique ridge builder solution brings excellent definition and clarity to fingerprint ridge structures. It makes possible to obtain legible fingerprints from brick masons, agricultural workers, the elderly, or anyone else who has poor fingerprint ridge structure. This product will help increase the number of successful latent print searches and subsequent comparisons by ensuring better initial fingerprint recordings. Available in two forms: liquid and disposable tissues. Apply liquid with a cotton swab or wipe disposable pad on fingers before fingerprinting.



Available in:

Ridge Builder Solution 100 ml / 200 ml



Portable Fingerprint Taking Workstation

Contents of the Kit: -

Finger Print Round Pad (2" Dia Inkless)	01
Finger Print Rectangular Pad (4" X 6")	01
Palm Print Rectangular Pad (6" X 8")	01
Finger Print Card Holder (A4 Size; Plastic Molded)	01
Finger Print Search Slips (can be customized - pack of 100)	01
Finger Print Record Slips (can be customized - pack of 100)	01
Finger Print Ink Cleaning Towellettes (pack of 100)	01
Portable foldable working station / table	01
All in one co-polymer carrying case	01



Cadaver Finger Print Taking Kit

Item Description	Specifications
Finger Print Round Pad	2" Dia Inkless
Finger Print Record Slips	Pack of 50
Cadaver Finger Straightener	Steel, Set of Three
Finger Print Cadaver Spoon	Nickel Plated, Steel
Small Handy Case	Carrying Case



Finger Print Taking Kit

Item Description	Specifications	Quantity
Finger Print Small Slab	75mm X 100mm X 10mm Glass	01
Finger Print Small Roller	Rubber 2"	01
Finger Print Slab	S.S. 4inch X 10inch, wood mounted	01
Finger Print Ink	100ml Tube	01
Finger Print Roller	Rubber 4" with stand	01
Cleaning Towelettes	Waterless 10" x 12"(Set of 6)	01
Finger Print Round Pad	2" Dia Inkless	01
Finger Print Pad	4" X 6" Inkless	01
Finger Print Pad	6" X 8" Inkless (for Palm Print)	01
Finger Print Card Holder	Stamping Set Type Plastic Molded	01
Finger Print Search Slip	Standard Slip / Customized (Pack of 50)	01
Finger Print Elimination Pad	Pack of 50	02
Finger Print Record Slips	Pack of 50	01
Finger Print Cadaver Spoon	Plastic Molded	01
Cadaver Finger Straightener	Plastic, Set of Three	01
Finger Print Ridge Builder	100 ml	01
Aluminum / Molded Case	Customized Carrying Case	01



Latent Print Kit

Item Description	Specifications	Quantity
Finger Print Powder	Black	50 Gm
Finger Print Powder	White	50 Gm
Finger Print Powder	Grey	50 Gm
Finger Print Powder	Dual Use	50 Gm
Finger Print Fluorescent Powder	Yellow	50 Gm
Finger Print Fluorescent Powder	Green	50 Gm
Finger Print Magnetic Powder	Grey	50 Gm
Finger Print Fluorescent Magnetic Powder	Orange	50 Gm
Finger Print Feather Brush	Marabou Feather	01 No
Finger Print Feather Brush	Ostrich Feather	01 No
Finger Print Fiber Brush	Fiber Glass Filament	01 No
Finger Print Magnetic Applicator	Normal	01 No
Atomizer (Finger Print Powder Fuming Gun)	Plastic Top Model	01 No
Finger Print Lifting Tape	1 inch	01 No
Finger Print Lifting Tape	2 inch	01 No
Finger Print Backing Cards 4"x4"	Black	24 Nos
Finger Print Backing Cards 4"x4"	White	24 Nos
Finger Print Lifters 2"x3"	Black	24 Nos
Finger Print Lifters 2a"x3"	White	24 Nos
Magnifier Aspheric	75mm, 3X	01 No
Portable Evidence Blue LED Lamp	Battery Operated	01 No
Gloves	Latex, Cotton, Heavy	2 each
Scissors	Steel	01 No
Tweezers	Steel	01 No
Scalpel	Disposable	01 No
Liquid Soap	50ml	01 No
Towel	Small	01 No
Small Aluminum Case with shoulder strap	Customized Carrying Case	01 No



MAXX Finger Print Developer Kit

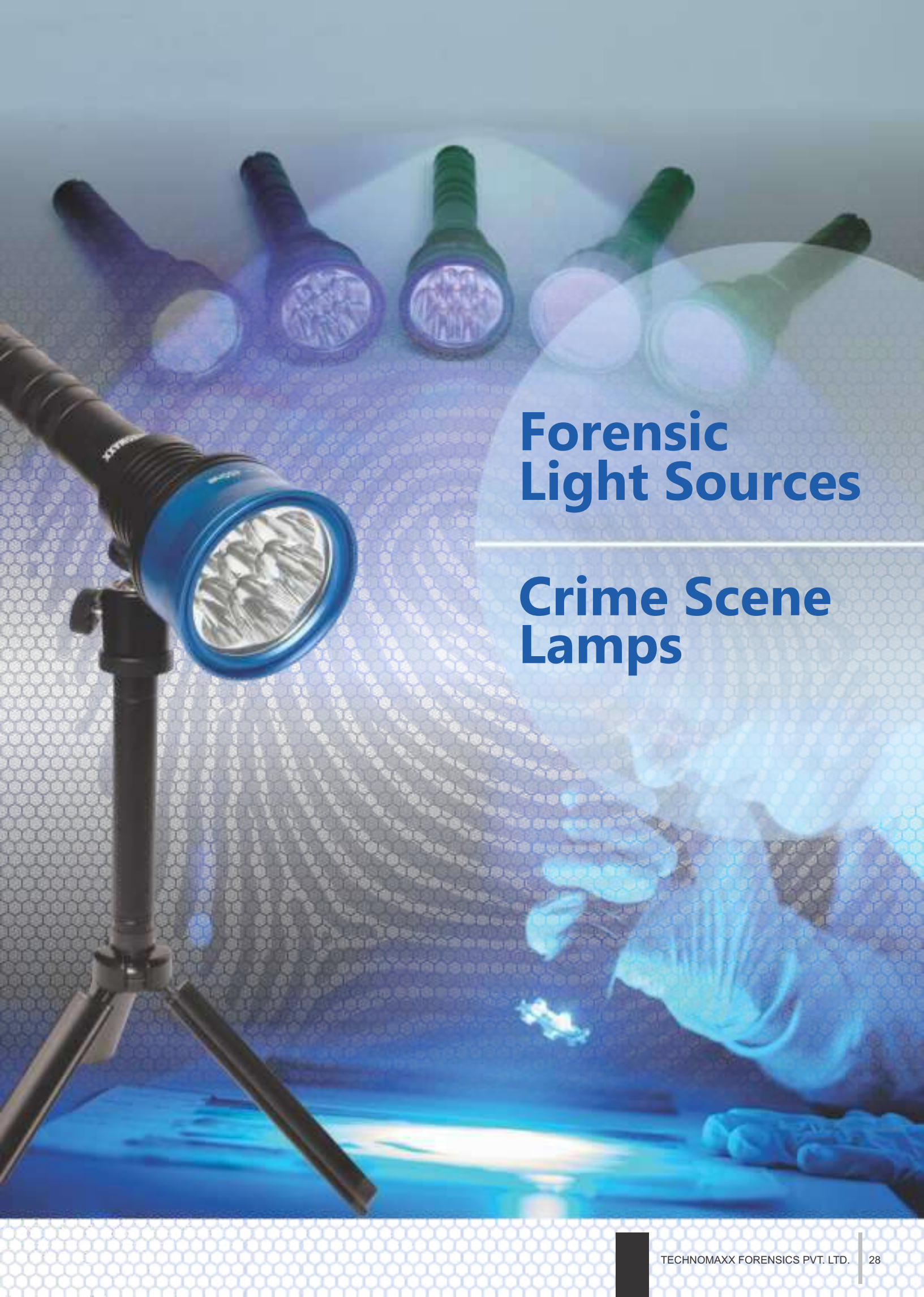
Item Description	Quantity
Finger Print Regular Powder - Black	- 50 Gms
Finger Print Regular Powder - Grey	- 50 Gms
Finger Print Regular Powder - White	- 50 Gms
Finger Print Regular Powder - Dual Use	- 50 Gms
Finger Print Magnetic Powder - Black	- 100 Gms
Finger Print Magnetic Powder - Grey	- 100 Gms
Finger Print Magnetic Powder - White	- 100 Gms
Finger Print Magnetic Powder - Dual Use	- 100 Gms
Finger Print Florescent Powder - Red	- 50 Gms
Finger Print Florescent Powder - Yellow	- 50 Gms
Finger Print Florescent Powder - Green	- 50 Gms
Finger Print Florescent Powder - Orange	- 50 Gms
Finger Print Florescent Magnetic Powder - Red	- 100 Gms
Finger Print Florescent Magnetic Powder - Yellow	- 100 Gms
Finger Print Florescent Magnetic Powder - Green	- 100 Gms
Finger Print Florescent Magnetic Powder - Orange	- 100 Gms
Finger Print Feather Marabou Brush	- 02 nos
Finger Print Feather Ostrich Brush	- 02 nos
Finger Print Fiber Brush (Fiber Glass Filament)	- 01 No
Finger Print Magnetic Powder Applicator	- 02 nos
Soft Hair Brush	- 01 nos
Finger Print Lifting Tape 1"	- 02 nos
Finger Print Lifting Tape 2"	- 01 nos
Finger Print Lifting Tape 3"	- 01 nos
Finger Print Black Lifters	- 24 nos
Finger Print White Lifters	- 24 nos
Finger Print Transparent Lifters	- 24 nos
Finger Print Black Backing Cards	- 24 nos
Finger Print White Backing Cards	- 24 nos
Latent Iodine Print Process with Fixative	- 01 set
Magnifier White Light Illuminated 3 X 3" Dia	- 01 no
Magnifier Light Illuminated Scaled Fixed Focus 8 X	- 01 no
Magnifier / Linen Tester Folding Light Illuminated 5 X	- 01 no
Portable Evidence Blue LED Lamp Battery Operated	- 01 no
Scissors	- 01 no
Scalpel	- 01 no
Tweezers	- 01 no
Latex / Nitrile Gloves	- 05 pair
Cotton Gloves	- 02 pair
Evidence Marker Fine Tip - Black, Blue, Red	- 01 each
ALUMINUM CARRYING CASE	- 01 each





TECHNO Finger Print Kit

Item Description	Quantity		
Finger Print Round Pad (2" Dia Inkless)	- 01 no	Finger Print Lifting Tape 2"	- 01 no
Finger Print Rectangular Pad (4" X 6")	- 01 no	Finger Print Lifting Tape 4"	- 01 no
Palm Print Rectangular Pad (6" X 8")	- 01 no	Finger Print Black Lifters	- 24 nos
Finger Print Card Holder (A4 Size; Plastic Molded)	- 01 no	Finger Print White Lifters	- 24 nos
Finger Print Regular Powder - Black	- 50 Gms	Finger Print Transparent Lifters	- 24 nos
Finger Print Regular Powder - Grey	- 50 Gms	Finger Print Black Backing Cards	- 24 nos
Finger Print Regular Powder - Dual Use	- 50 Gms	Finger Print White Backing Cards	- 24 nos
Finger Print Magnetic Powder - Black	- 100 Gms	Latent Iodine Print Process with Fixative	- 01 set
Finger Print Magnetic Powder - Grey	- 100 Gms	Magnifier White Light Illuminated 3 X 3" Dia	- 01 no
Finger Print Magnetic Powder - Dual Use	- 100 Gms	Illuminated Magnifier Scaled Fixed Focus 8 X	- 01 no
Finger Print Florescent Powder - Orange	- 50 Gms	Folding Magnifier Illuminated 5 X	- 01 no
Finger Print Florescent Magnetic Powder - Yellow	- 100 Gms	Evidence Blue LED Lamp Battery Operated	- 01 no
Finger Print Florescent Magnetic Powder - Orange	- 100 Gms	Scissors	- 01 no
Finger Print Feather Marabou Brush	- 02 nos	Scalpel	- 01 no
Finger Print Feather Ostrich Brush	- 02 nos	Tweezers	- 01 no
Finger Print Fiber Brush (Fiber Glass Filament)	- 01 No	Latex / Nitrile Gloves	- 05 pair
Finger Print Magnetic Powder Applicator	- 02 nos	Cotton Gloves	- 02 pair
Soft Hair Brush	- 01 no	Evidence Marker Fine Tip - Black, Blue, Red	- 01 each
		ALUMINUM CARRYING CASE	- 01 each



Forensic Light Sources

Crime Scene Lamps



Blue LED Flash Light



15 Watt Bright White LED Flash Light



Portable UV Torch Tube

This small tube model portable 6 volts UV lamp, is best to be used with all fluorescent / fluorescent magnetic powders. Comes with 4 batteries & a wrist- carrying strap. Combine the superiority of our fluorescent powders with the performance of this Ultraviolet Hand Lamp to get the best possible results.

3 IN ONE
CRIME SCENE LAMP



Contents of 3 in 1 Crime Scene Kit

- Techno 3 in 1 LED Torch (10 Watt) - UV, Violet, Blue
- Orange / Yellow Goggle
- 2 Li-ion Batteries & Charger
- Techno Plastic Molded Carrying Case

LED Lamp Chart				
LED LIGHT OUTPUT	WAVELENGTH OR COLOR TEMPERATURE	BANDWIDTH (nm)	SUGGESTED GOGGLES	APPLICATIONS
UV	365nm	360-370	UV-absorbing spectacles	Natural and UV fluorescent dyes and powders, bite marks, bruising, pattern wounds, rare document/ stamp/artwork examination
Violet	410nm	400-410	Yellow	Untreated blood absorption (detection of blood against dark background)
Blue	450nm	440-460	Yellow or orange	Biological stains on white background, basic yellow, bone, blood, and

TECHNOMAXX

FLS30

LED Crime Scene Lamp

Violet, Blue, White



Contents of FLS30 Crime Scene Lamp Kit

- Techno Violet, Blue, White LED Torch
- Yellow, Orange, Transparent Goggle
- 3 Li-ion Batteries & Charger
- Techno Aluminum Frame Carrying Case

LED Lamp Chart				
LED LIGHT OUTPUT	WAVELENGTH OR COLOR TEMPERATURE	BANDWIDTH (nm)	SUGGESTED GOGGLES	APPLICATIONS
Violet	410nm	400-410	Yellow	Untreated blood absorption (detection of blood against dark background)
Blue	450nm	440-460	Yellow or orange	Biological stains on white background, basic yellow, bone, blood, and
White	6500 K	4,500-10,000 K	N/A	General field illumination and inspection

TECHNOMAXX FLS90

A LED light source for illuminating shoe prints, fibers, blood spatter & particulate evidence. It is LED based light source that provides an alternative beam profile for locating evidence at the crime scene. Cylindrical lens to give a wide "linear" light beam that is ideal for detecting surface debris and shoe prints in dust. Accessories include red, amber & clear UV absorbing goggles to enhance contrast. A telescopic pole / tripod which adds convenience for prolonged floor and static searches.



Contents of FLS30 Crime Scene Lamp Kit (LED - 3w/5w)

- Techno UV, Violet, Blue, Cyan, Green, Amber, Red, IR ,White Torches
- Yellow, Orange, Red, Transparent Goggle
- Viewing / Snap on Filter
- Diffuser (optional)
- 9 Li-ion Rechargeable Batteries
- A.C. and D.C. / Vehicle / USB Charger
- Tripod
- Techno Plastic Molded Carrying Case with pre cut foam inserts

LED Lamp Chart				
LED LIGHT OUTPUT	WAVELENGTH OR COLOR TEMPERATURE	BANDWIDTH (nm)	SUGGESTED GOGGLES	APPLICATIONS
UV	365nm	360-370	UV-absorbing spectacles	Natural and UV fluorescent dyes and powders, bite marks, bruising, pattern wounds, rare document/ stamp/artwork examination
Violet	410nm	400-410	Yellow	Untreated blood absorption (detection of blood against dark background)
Blue	450nm	440-460	Yellow or orange	Biological stains on white background, basic yellow, bone, blood, and
Cyan	500nm	490-510	Orange	Latent fingerprints
Green	525nm	520-550	Orange	Enhance Ninhydrin-treated samples
Amber	590nm	585-597	Red	sample contrast
Red	630nm	620-645	N/A	Hair, questionable documents
IR	810nm	800-820	N/A	Blood Spatter, Fibers, Gunshot Residues, Inks
White	6500 K	4,500-10,000 K	N/A	General field illumination and inspection

TECHNOMAXX
FLS900



Contents FLS 900

- Maxx UV LED Torch
Maxx Blue LED Torch
Maxx Violet LED Torch
Maxx Violet LED Torch
Maxx Cyan LED Torch
Maxx Green LED Torch
Maxx Amber LED Torch
- Maxx Red LED Torch
Maxx IR LED Torch
Maxx White LED Torch
Orange Goggle
Yellow Goggle
Red Goggle
Transparent Goggle
- High Power Li-ion Batteries
AC / Main Charger
DC / Car Charger
Tripod
Techno Polypropylene Case

LED Lamp Chart				
LED LIGHT OUTPUT	WAVELENGTH OR COLOR TEMPERATURE	BANDWIDTH (nm)	SUGGESTED GOGGLES	APPLICATIONS
UV	365nm	360-370	UV-absorbing spectacles	Natural and UV fluorescent dyes and powders, bite marks, bruising, pattern wounds, rare document/ stamp/artwork examination
Violet	410nm	400-410	Yellow	Untreated blood absorption (detection of blood against dark background)
Blue	450nm	440-460	Yellow or orange	Biological stains on white background, basic yellow, bone, blood, and
Cyan	500nm	490-510	Orange	Latent fingerprints
Green	525nm	520-550	Orange	Enhance Ninhydrin-treated samples
Amber	590nm	585-597	Red	sample contrast
Red	630nm	620-645	N/A	Hair, questionable documents
IR	810nm	800-820	N/A	Blood Spatter, Fibers, Gunshot Residues, Inks
White	6500 K	4,500-10,000 K	N/A	General field illumination and inspection

TECHNOMAXX

FLS5000

High Intensity LED Light Source

UV, Violet, Blue, Green, White



Contents FLS 500

- Techno UV LED Torch

Techno Violet LED Torch

Techno Blue LED Torch

Techno Green LED Torch

Techno White LED Torch
- Orange Goggle

Yellow Goggle

Transparent Goggle

Red Goggle

5 Li-ion Batteries
- AC / Main Charger

DC / Car Charger

Telescopic Pole / Tripod

Techno Polypropylene Case

LED Lamp Head Chart				
LED LIGHT OUTPUT	WAVELENGTH OR COLOR TEMPERATURE	BANDWIDTH (nm)	SUGGESTED GOGGLES	APPLICATIONS
UV	365nm	360-370	UV-absorbing spectacles	Natural and UV fluorescent dyes and powders, bite marks, bruising, pattern wounds, rare document/ stamp/artwork examination
Violet	410nm	400-410	Yellow	Untreated blood absorption (detection of blood against dark background)
Blue	450nm	440-460	Yellow or orange	Biological stains on white background, basic yellow, bone, blood, and
Green	525nm	520-550	Orange	Enhance Ninhydrin-treated samples
White	6500 K	4,500-10,000 K	N/A	General field illumination and inspection

Impression Evidence





Foot & Tire Print Casting Kit

This kit contains all the supplies you'll need to cast footprints and tire prints as well as other impressions in the dirt, sand, mud and snow. This complete outfit is used for making exact reproductions of footprints and tire prints in mud, sand and dirt. Casting material is finely ground for fast-setting and exact detailed reproduction.

Item Description

Foot Print Frame
Dirt Hardener
Flexible Mixing Bowl (dish)
Spatula
Mixing Spoon
Measurement Tape
Evidence Tag
Wire Gauge
Casting Material
Aerosol Sparer
Water Can
Silicon Spray
Disposable Pipettes
Spray to Mark Evidence Area
Surface Brush
Molding Clay

Specifications

Aluminum 14" x 6" x 2"
200 ml
Different Sizes 3 Nos
Steel
Steel
Small
Pre Printed (Pack of 50)
4" x 10" (Pack of 20)
2.5 Kg Top Grade
Plastic
1 Ltr
One Bottle
Pack of 12
One Bottle
Normal
50 gm

Molded Carrying Case

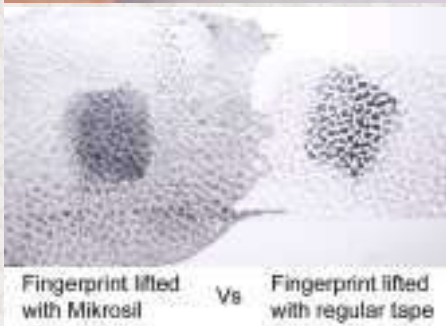




PUTTY



Latent Chance Print with Mikrosil



Mikrosil - a casting material for forensic use - is manufactured in four different colors

Casting Tool marks:

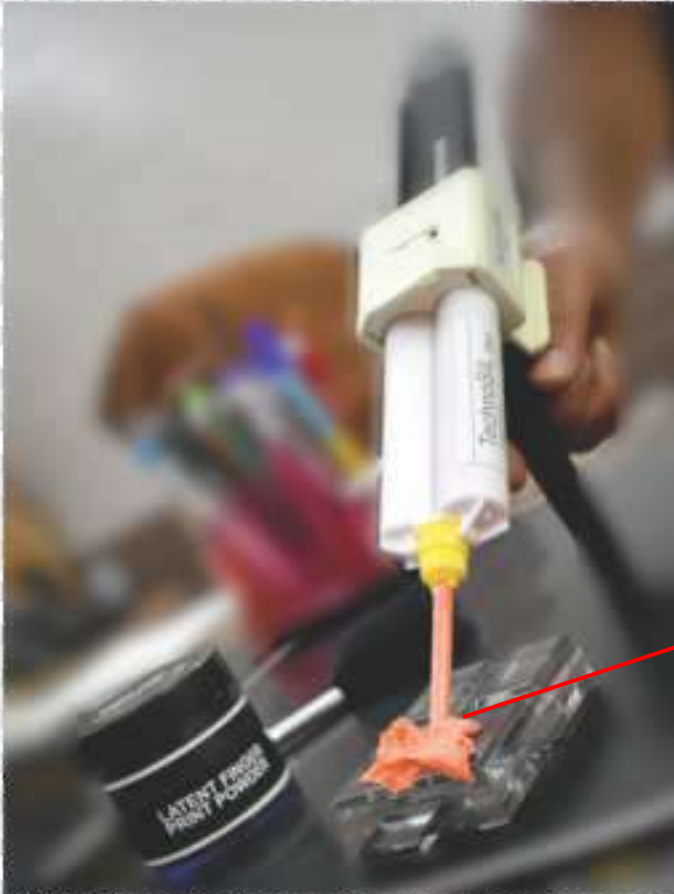
If you use Brown or Gray MIKROSIL we promise an excellent result. MIKROSIL is designed by a criminalist for criminalists. It has been formulated to give the best rendering of small details, highest contrast for microscopical observations, good releasing and short setting time even in cold weather. These properties are of special importance, in cases of very shallow marks and with small details, requiring large magnification.

Lifting fingerprints and shoeprints:

The use of White or Black MIKROSIL for this type of evidence can sometimes be the best and outstanding method. All crime scene investigators have had to deal with the situation of trying to lift a latent print from an object with a textured surface or a relief pattern. Usually, a latent print would be lifted with adhesive tape, but on textured surface, the tape does not adhere well. The powdered print will be on the raised parts where the tape adheres well and on the lower parts of the surface where the tape will not make good contact, if any at all. If you use MIKROSIL, White for dark powder and Black for light and fluorescent powder, to lift this type of prints, you will not have any problems - all parts of the print will be lifted.

Even powdered shoeprints can be lifted with MIKROSIL. The picture below shows a comparison of a shoeprint lifted with White MIKROSIL and the suspected shoe.

SILICON Casting Impression Kit



TechnoSIL Casting Material has been specially developed for forensic applications. The high tear-resistance and the ideal recovery after deformation of over 99.8% are the keys to a precise impression result. With its special coloring and the homogenous mixing without air inclusions the impression can be viewed with the stereo microscope without unwanted light reflexes.

TechnoSIL Auto Mix Extruder Gun eliminates manual mixing.

TechnoSIL can be used on curved surfaces, and flat, horizontal or vertical planes. When used on vertical planes, a small amount of silicone is needed. This casting silicone can also be used on smooth or rough surfaces, human skin and blood evidence.

TechnoSIL is a highly-sensitive, DNA-friendly casting material for toolmarks, firearms and lifting latent prints from difficult surfaces. TechnoSIL quickly and easily applies casting silicone to a variety of surfaces, including human skin, rough and textured surfaces such as brick, and curved surfaces such as bottle necks.

Kit Contents

- Techno Gun (1)
- 50ML Dark Casting Cartridge (1)
- 50 ML Light Casting Cartridge (1)
- Mixing Tips(20)
- Spreader Tips (20)
- Small Spatulas (5)

Molded Carrying Case





Electrostatic Dust Print Lifting Kit

The output voltage of this instrument can be continuously adjusted between 8KV and 30KV. The user can decide the voltage according to the thickness of the dust on the ground. Low voltage should be used when the dust on the ground is thick while high voltage should be used when the dust on the ground is thin. With some related experience accumulated after a period of application, the user can achieve the optimum lifting effect with the options provided by the instrument.

Contents of Kit :

Electrostatic Dust Mark Lifting Device	- 01 no
Static Discharge Cable	- 01 no
Film Roll for Lifting Dust Mark 20" wide	- 01 no
Ground Plane, Steel 4"x6"	- 01 no
Ground Plane Insulated Sheet 5"x7"	- 01 no
Heavy Duty Rubber Gloves	- 01 no
Plastic Handle Scissor	- 01 no
Wooden Handle Roller	- 01 no
Set of Photography Rulers (wooden folding, Vinyl, ABFO)	- 01 pkt
Set of Adhesive Rulers (L Shape Roll, Rigid Photo Evidence Scale)	- 01 set
Silver / Black Aluminum Carrying Case	- 01 no





Master Foot Print Investigation Kit

This is a complete outfit for making exact reproductions of footprints on, mud, sand, dirt and dust. It is excellent for field investigations. Casting material is finely ground for fast-setting and exact detailed reproduction. The kit is complete with application procedures and instructions.

Casting Process

Materials and supplies for casting footprint impressions at the crime scene is for exact reproduction of impression evidence. Resulting casts are rock-hard and require no reinforcement. Use this kit for recovery of impressions found in mud, sand and soil.

Electrostatic Process

One of the most overlooked forms of physical evidence at a crime scene is impression evidence, specifically dust print impressions. Many indoor crime scenes contain varying amounts of dust on different surfaces. That's where the Electrostatic Process of Lifting Foot Print comes in.



WIDE ANGLE FLAT FOOT PRINT SEARCH LIGHT

Often thought of as a form of evidence nearly as valuable as fingerprints, impression evidence must receive priority handling. Most of the times impression evidence exist in the form of footprints. The obvious place to look for footprint impressions is in the soil at or near the crime scene. This might include dust prints or the impressions made from wet shoes on dry floors. A visual search is made prior to any attempts to locate and collect other forms of physical evidence. When outdoors, protect the area by erecting barriers and posting sentries. If footprint evidence is located and the weather is threatening, it may be necessary to erect a tent or similar shelter in order to protect the evidence.

Contents of Kit :

Rechargeable Foot Print Search Light
Electrostatic Dust Print Lifting Device
Static Discharge Cable
Film Roll - 20" wide
Ground Plane, Steel 4"x6"
Ground Plane Insulated Sheet 5"x7"
Heavy Duty Rubber Gloves
Plastic Handle Scissor
Wooden Handle Roller
Photographic Folding Scale 2Mtr
Pack of Rigid Photo Adhesive Scales
Evidence Storage Boxes
Foot Print Lifters 6" x 15" (Black)
Foot Print Lifters 6" x 15" (White)
Evidence Labels

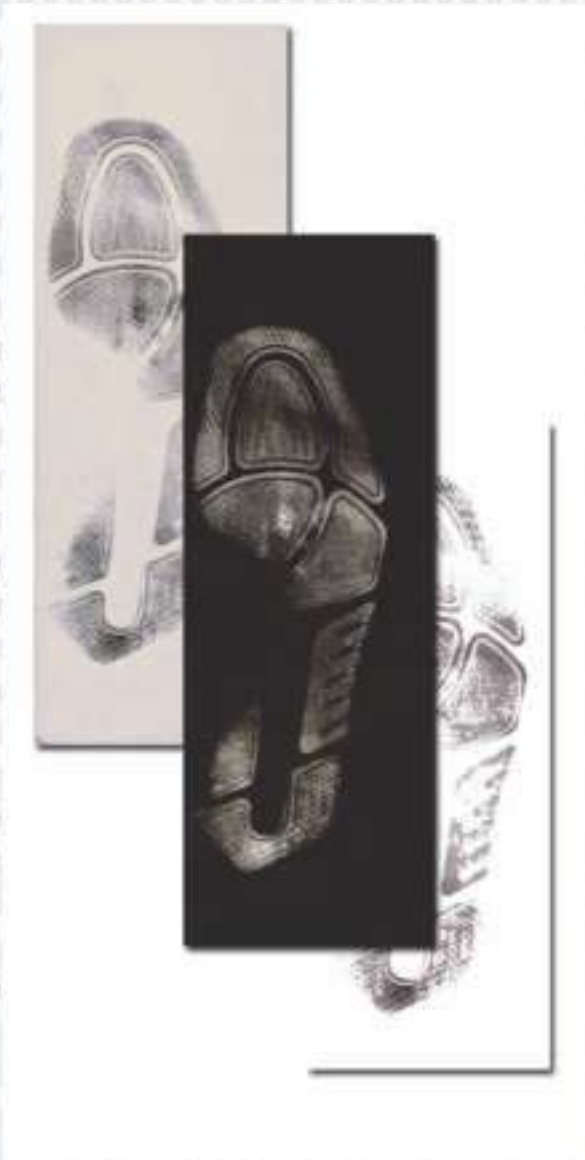
**Silver/Black, Aluminium
Carrying Case**

Wide Angle Flat Foot Print Search Light

Features: -

- 4 Cree LED X 10w each
- 3200 lumens; 6500K
- LED Life - 50000 hours
- Flat light
- Operating voltage 12V
- Runtime - 100 Minutes
- Rechargeable lithium battery
- AC/DC dual-use
- Adjustable Switch

Foot Print Residue Lifter



These unique lifters are coated with super sensitive acrylic adhesive for lifting the most minute particles. Simply remove the adhesive protector, apply to the area, lift and mount on backing material supplied with each lifter. Lifters are 6"x15" are available in Black back and white back.

These foot print lifters are uniquely design to allow for an accurate transfer of foot or footwear prints from dusty or dirty surfaces.



BIO - FOAM IMPRESSION SYSTEM



Bio-Foam Test Impression Foam is a closed-cell, low-density impression foam that produces a detailed reproduction of a shoe or other surface. The impression foam accurately records wear patterns and surface defects making it ideal for three-dimensional evidence test impressions. Bio-Foam Test Impression Foam is available in a single slab, single slab case, or double slab packaging.

A photograph of a crime scene investigation. A yellow crime scene tape with the text "CRIME SCENE DO NOT CROSS" is stretched across the top. Below the tape, a gloved hand holds a magnifying glass over a small, dark, circular object on a light-colored surface. The background is a blurred outdoor area with trees and a building.

CRIME SCENE DO NOT CROSS

Visual Aids / Magnifiers

Combo of Bench and Handheld Magnifier

- Heavy metal base for stability
- Power saving 6 high light LEDs with 3 different brightness
- Energy saving rechargeable design
- Flexible goose-neck design allows the user adjust various heights and positions



Fingerprint evidence is still the most valuable form of criminal identification and to achieve the most accurate results when fingerprints are classified and compared, only the best quality magnifiers should be considered

Table Top Comparator Magnifier with Light**Features:**

- Built-in LED lights with diffuser
- 4" to 6" diameter
- Gooseneck capable of rotating more than 180 degrees
- Viewing base measuring 8"x11" and 12.5" x 18"
- Operated on 220V AC
- Comes with Power bank and can be operated in field



Head Mount Magnifier

This head magnifier has a detachable LED light, which can be removed to provide an independent source of light that has two magnets for attaching to steel objects. It can be worn with spectacles and has an adjustable headband for greater comfort and integral visor to cut out ambient light.

It comes with four changeable lenses (1.2X, 1.8X, 2.5X, 3.5X) supplied with their own storage case. The lenses stay firmly in position when raised or lowered, leaving both hands free to work.

Contents

Head Loupe with removable LED, Light (batteries not included).
Blanking plate for Visor when LED is removed
Box of four lenses
Magnification for Working Distance
1.2x, 1.8x, 2.5x, 3.5x



Simple 2-Button Release System



Easy push-pull switch



2 Ultra Bright Energy-efficient LED Lights

Illuminated Round LED Magnifier Multi Head Magnification Attachment

This professional multi magnification magnifier is an excellent aid for examining evidence. An ON/OFF switch is provided for the battery-supplied illumination.



**Illuminated 8X Scaled Magnifier**

This pocket-sized companion is equipped with a built-in illuminator and a powerful 8X lens. Slip it in a shirt or jacket pocket always ready when you need it. Housed in a tough, lightweight, plastic case. This is the go-anywhere tool for locating evidence at the crime scene.

Linen Tester / Folding Magnifier

This high-quality, 5X, 8X, 10X, 12X and 15X fixed-focus magnifier folds up into a compact plastic or stainless steel unit for storage in a vinyl case. The lenses are of fine quality, optically ground and polished glass. The base is clearly marked with graduation lines on 4 sides.

**Linen Tester / Folding Magnifier**

This high-quality, 5X, 8X, 10X, 12X and 15X fixed-focus magnifier folds up into a compact plastic or stainless steel unit for storage in a vinyl case. The lenses are of fine quality, optically ground and polished glass. The base is clearly marked with graduation lines on 4 sides.

Digital Magnifier



Digital Magnifier is a variation of traditional optical microscope that uses optics and a digital camera to output an image to a monitor. This digital magnifier has its own in built LED light source, designed to use with a computer / laptop. Digital magnifier is perfect for latent print examination, allowing the examiner to review prints without having to bend over the magnifier, can be used at a crime scene or in the lab.

Features :

- Built in light source.
- USB Power
- Portability
- Plug-n-play / easy to install
- Built in stand



Focus Distance	Horizontal	Vertical	Magnification
3mm	0.8mm	0.65mm	200X
25mm	13mm	10mm	15X
75mm	44mm	32mm	5X
100mm	55mm	41mm	3X
120mm	66mm	49mm	2.5X

Stand alone microscope with built in 3.5" LCD screen and microSD card that offers connectivity to a computer or TV.

- Precision: Superb image sharpness provided by high resolution camera with adjustable focus. Up to 500x magnification thanks to white LEDs ensure optimal lighting.
- Flexible use: Rechargeable Li-ion battery allows for portable use without plugging the unit into a PC or laptop.
- Multiple output options: Captures photos or videos which can be saved on the microSD card , transferred to a computer, and viewed on a computer.
- Countless applications: Ideal for the detailed examination of various types of evidence articles.

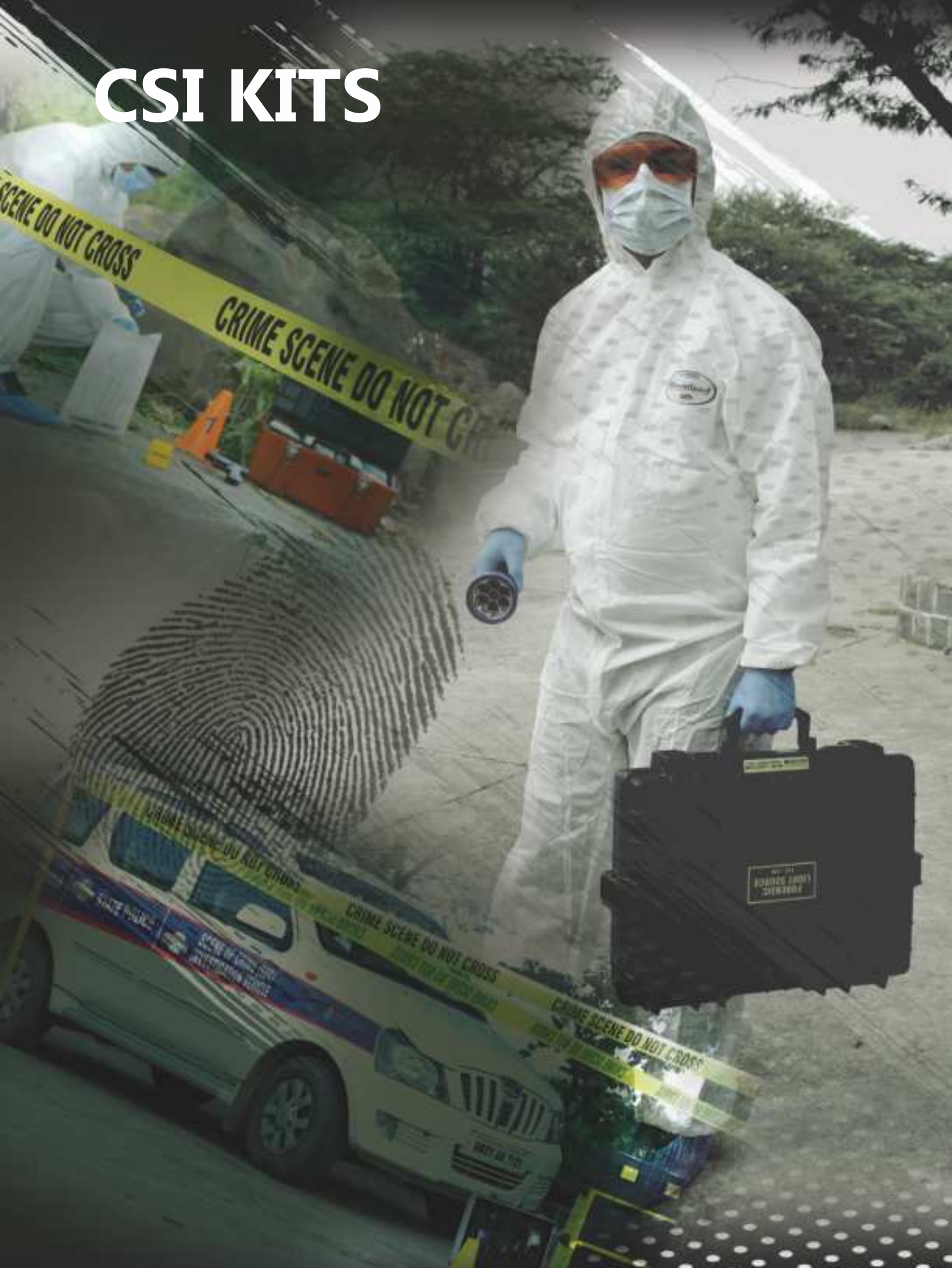
Package Contents

- Standalone Unit
- Battery
- Power Adapter
- USB Cable
- User Manual
- Cleaning Fabric

**Features / Specifications**

- Image Sensor: 5 Megapixels (True Resolution)
- LCD Panel: 3.5 Inches
- Zoom: 4x
- High Still Capture Resolution
- Video Capture
- Focus Range: Manual Focus from 10mm to 50mm
- Frame Rate: Maximum 30f/s under 600 Lux Brightness
- Magnification Ratio: Up to 500x
- Light Source: LED (Adjustable by Control Wheel)
- Battery: 3.7V 1050mAh Rechargeable lithium battery (recharged by adaptor or USB)
- Main Product Dimensions: 107x147x228mm (L x W x D)
- Main Product Weight: 763gm

CSI KITS





The frequency of sexual crime is increasing alarmingly and the field expert is compelled to gather and preserve highly fragile, unstable physical evidence. The following products are designed to aid in evidence identification and collection.

This is a complete field and lab kit that enables the investigator to perform contact testing and verification of suspected seminal stains. This test is considered to be the most conclusive test for the presence of semen. The content of this enzyme is from 20 to 400 times greater in human semen than in any other fluid. This fact makes it unlikely that another material would test positive and give false results

Item Description	Quantity
Disposable Pipette with 3 ml Bulb	- 20 nos
Contact Filter Papers 1" X 2", 100 nos	- 10 pkt
Bottle of Distilled Water 125 ml	- 02 nos
Spot Test Cards of Acid Phosphatase Test	- 30 nos
Spot Test Cards of PSA	- 20 nos
Semen Stain Detection Light Source with Goggle	- 01 no
Spray Power Unit	- 04 nos
Glass Vials	- 20 nos
Cotton Balls	- 01 pkt
Cotton Gauze Small Roll	- 04 pkt
Pricking Needles, 100 nos	- 01 pkt
Microscopic Plain Glass Slides	- 01 pkt
VDRL Slide, 3 Cavity	- 10 nos
Watchglass, 3" Dia, 20 nos	- 01 pkt
Scissors - Stainless Steel, 6"	- 01 no
Forceps - Stainless Steel, 6"	- 01 no
Spatula - Stainless Steel, 6"	- 01 no
Latex Gloves	- 05 pairs
Nitrile Gloves	- 05 pairs
Cotton Gloves	- 02 pairs
Rubber Hand Gloves	- 01 pairs
Evidence Identification labels, "Crime Evidence"	- 50 nos
Plastic Molded Customized Carrying Case	- 01 no

Acid Phosphatase Test

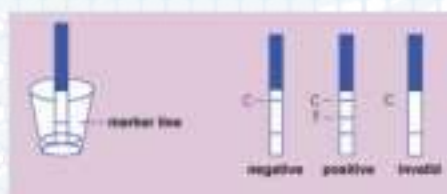
A 2-5 drop aliquot of deionized water was placed on a suspect area of a garment, and an AP test strip was pressed against it. A color change to bright purple within 15 s was a POSITIVE test. Alternatively, a cotton-tipped swab was placed against the wetted area of the garment, and then the garment was pressed gently around the swab in order to saturate the swab with solution. This was done in several places on the garment. Then, the swab was pressed against an AP test strip. This procedure yielded an easily visualized, high-contrast spot. It also avoided leaving any stain on the garment.



Prostate Specific Antigen Test

A 15-mL aliquot of water was placed in a coffee cup. The suspect area (i.e. crotch) of a pair of cotton underwear was extracted in the cup by repeatedly allowing water to soak in, then pressing it out. Finally, the garment was wrung out into the cup. A PSA test strip then was placed into the cup. It was necessary to tilt the cup on edge to immerse the strip. Care was taken not to immerse the strip above the marker line. After 10 minutes, the strip was removed and laid on a clean, dry surface. The strip was read after an additional 10 minutes. Resolution continued to improve for 30 minutes after the strip was removed from the coffee cup, but tended to decrease after that. A POSITIVE test was indicated by two lines as shown in Fig. 10. A strongly positive test was clearly visible within two minutes, while a weakly positive test took 20 minutes (after immersion) to become evident.

Absorptive pads were tested by placing 25 mL of water into the coffee cup (for a full pad) or 10 mL for a mini-pad, and repeatedly extracting the pad manually. Then, the pad was wrung out into the cup and discarded. The PSA test was carried out as usual.



Prostate Specific Antigen Test



Blood Detection Kit

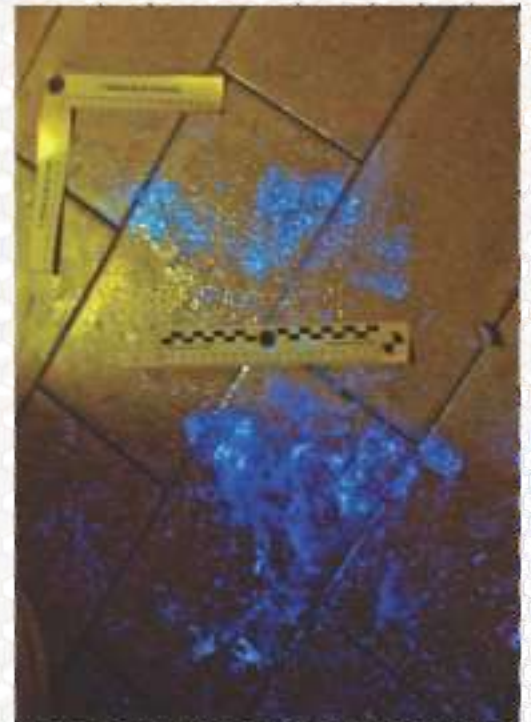
All stains suspected of being blood should be chemically checked in the field, especially when their nature is doubtful. Field test of dried stains at the crime scene are often essential in locating and making preliminary presumptive of blood.

This kit contains all the essential equipment for blood testing in any field investigation situation. It has the advantage that it contains all conventional and modern methods material. All the necessary support equipment is included. The kit and accessory equipment are also suitable for laboratory use. Through the use of this kit, the field investigator can prove the presence or absence of blood. And also determine whether the blood detected is of human or not.



Contents of the Kit: -

Disposable Pipette with 3 ml Bulb	- 12 nos
Contact Filter Papers 1" X 2", 100 nos	- 10 pkt
Whatman Filter Paper No 1, Size 125mm Disc	- 01 pkt
Blood Stain Detection Reagent Set (Benzidine Process)	- 01 Set
Blood Stain Detection Tablets - DNA Safe (Bluestar)	- 08 nos
Blood Stain Detection Tablets - Normal (Bluestar)	- 08 nos
Blood Origin Identification Strip (Hexagon OBTI)	- 24 nos
Blood Stain Evidence Template (pack of 24)	- 01 pack
Bottle of Distilled water 125 ml in Aerosol Sprayer	- 04 nos
Blood Collection EDTA Tubes	- 10 nos
Glass Vials	- 10 nos
Cotton Balls	- 01 pkt
Cotton Gauze Small Roll	- 04 pkt
Pricking Needles, 100 nos	- 01 pkt
Microscopic Plain Glass Slides	- 01 pkt
VDRL Slide, 3 Cavity	- 10 nos
Watchglass, 3" Dia, 20 nos	- 01 pkt
Scissors - Stainless Steel, 6"	- 01 no
Forceps - Stainless Steel, 6"	- 01 no
Spatula - Stainless Steel, 6"	- 01 no
Latex Gloves	- 05 pairs
Nitrile Gloves	- 05 pairs
Cotton Gloves	- 02 pairs
Rubber Hand Gloves	- 01 pairs
Evidence Identification labels, "Crime Evidence"	- 50 nos
Plastic Molded Customized Carrying Case	- 01 no





BLUESTAR FORENSIC® is a new reagent that luminesces bloodstains that have been washed, wiped off, altered, diluted or that are otherwise invisible to the naked eye.

- Most effective blood revealer on the market.
- More effective than classic luminol.
- Extremely sensitive. Detects bloodstains down to 1:10,000 dilutions.
- Stronger luminescence. Does not require total darkness to be visible.
- Does not alter DNA nor affect ABO typing
- Works equally well on fresh or older, altered, or diluted stains.
- Easy to use. Fast dissolving tablets. Target area can be sprayed over and over again with same resulting luminosity.
- Safe, non-toxic. Easily recycled. No residues left after drying.

Bluestar® Forensic Tablets

Use this more cost-effective form of Bluestar® for training purposes only. This version of Bluestar® will react the same as the regular version. However, it will affect DNA. This product offers an economical way to train users without depleting the more costly fully active Bluestar® formula



Bluestar® Forensic Tablets (DNA Safe)

Choose between four pairs or eight pairs of individually sealed tablets. Each packet contains one reagent tablet and one catalyst tablet. Dissolve both tablets in distilled water and spray with a fine mist atomizer. Each pair will produce 125ml (4 oz) of solution. Eight pairs will produce 1 liter (32 oz).



Bluestar® Forensic Magnum

Bluestar® Forensic Magnum is three times more powerful than the standard version. This formulation is designed for use in critical cases where minute traces of blood are sought. Even with its increased sensitivity and greater luminosity, the formula does not destroy DNA. Contains 125 ml (4 oz) of chemiluminescent solution, and one foil pack containing 3 tablets of oxidizer. This kit is ideal for use in crime scene investigations seeking to ascertain the presence of blood. The ready-to-use components consist of a 500ml (16 oz) hermetically-sealed bottle of chemiluminescent reagent, a fine mist atomizer, 3 catalyst tablets, and a user's manual.





Bluestar® Forensic Kit

The kit is ideal for use in crime scene investigations seeking to ascertain the presence of blood. The ready-to-use components consist of a 500 ml(16 oz) hermetically sealed bottle of chemilluminescent reagent, a fine mist atomizer, 3 catalyst tablets and a user's manual.



Bluestar® Forensic Mini Kit

The mini kit is ideal for use in quick searches and small areas. It is ready to use with 2 125ml (4 oz) bottles of distilled water complete with vaporizer tops, and two pairs of Bluestar® Forensic tablets.



Hexagon OBTI

Immunochromatographic test for confirming the presence of human blood traces.

Screen for presence of human blood within 2 to 3 minutes. A two-part test consisting of a liquid-filled collection tube and a test strip denies or confirms the presence of human blood by a display of one or two blue lines.

Hexagon OBTI is the perfect complement to BLUESTAR® Forensic, but can also be used independently.

Advantages over classic luminol :

- Stronger luminescence
- Longer lasting reaction
- Higher sensitivity
- Total darkness not required
- Photos shot with ordinary camera
- Fully soluble
- Stable over time
- Easy to use
- Non-toxic

EXTREME SENSITIVITY

BLUESTAR Forensic is currently the most sensitive presumptive field test for blood. Invisible stains react immediately BLUESTAR Forensic, provoking an intense blue color luminescence (430 nm wave-length) visible to the naked eye in semi-darkness. Its 1: 100.000 sensitivity is such that it will detect blood in quantity much smaller than the minimum required to perform DNA typing. Only minute quantities of blood are needed for the reaction to occur. The luminescence that occur upon applying BLUESTAR® Forensic can be sprayed several times on the same area, making observation and picture taking easier. Evidential photographs can be taken with an ordinary camera, therefore eliminating the need for sophisticated photographic equipment.



PHENOLPHTHALEIN BLOOD DETECTION KIT

Phenolphthalein is a presumptive test that reacts with the heme molecule present in blood. A positive reaction gives a pink color. Filter paper in the image shows the characteristic color of a positive reaction with the phenolphthalein test, indicating the presence of blood.

Kit Contents

Step 1 Reagent - 2 bottles 50 ml each
Step 2 Crushable Ampoules - 10 Nos.
Step 3 Crushable Ampoules - 10 Nos.
Test Papers

Plastic Carry Case

TETRAMETHYLBENZADINE PROCESS

Tetramethylbenzidine (TMB) Blood Test Kit is a highly sensitive presumptive test used to determine whether a suspected stain is blood or not.

Tetramethylbenzidine (TMB) Blood Test Kit is packaged in a durable, lightweight plastic box for easy and safe transport from one crime scene to another. It includes all the premixed chemicals and supplies required to conduct the TMB blood test.



Positive TMB Test

DNA/Sexual Assault Evidence Collection Kit



Contents of the Kit: -

Mini FTA Cards (2 Source)	25 nos
Swabs with protected cover	10 no
Nitrile Gloves	05 pair
Masks	01 no
EDTA vials	02 nos
Urine vials	01 no
Paper Bags (Big & Small)	10 nos each
Small paper Envelops	10 nos
Cotton gauze	01 no
Cotton Balls	08 nos
Marker	01 no
Wooden Nail Scrubber	01 no
Scissor	01 no
Plastic Tweezers	02 nos
Glass Slide With protected cover	02 nos
Distilled Water 10 ml	01 no
Chain of Custody Labels	01 no
Pubic/ Hair Combs	02 nos
Soft Brush	01 no
Syringe 02 ml	02 nos
Syringe 05 ml	05 nos
Wooden Spatula	08 nos
Anal Speculum (For juvenile and Adults)	02 nos
Vaginal Speculum (For juvenile and Adults)	02 nos
Sterile swabs	100 nos
Swab Drying Rack	02 nos
Molded Carrying Case	01 no

This special kit can be used by various law enforcement agencies, this victim or sexual assault evidence collection kit developed to provide consistent, thorough evidence in case of suspect sexual assault they are available with forensic medico tools as well as FTA cards.

FTA cards provide stable, long term room temperature DNA storage with easy release using a simple method



Sexual Assault Evidence Collection Kit (SAECK)



Gloves	3 Pairs	Ampule of Saline Water	2 Nos.
Face Mask	3 Nos.	Ampule of Phosphate Buffer	2 Nos.
Disposable Gown	3 Nos.	EDTA vial	1 No.
Surgical Cap	3 Nos.	FTA Card	2 Nos.
Shoe Cover	3 Nos.	Surface Swab	4 Nos.
Hand Towel	3 Nos.	Cotton Swab	5 Nos.
Bio Hazard Disposable Bag	3 Nos.	Sterile Plastic Container	3 Nos.
Sterile Gauge	3 Nos.	Evidence Collection Kraft Bag (A3)	2 Nos.
Filter Paper	5 Nos.	Evidence Collection Envelope (A4)	5 Nos.
Alcohol Swab	4 Nos.	Evidence Collection Envelope (A5)	5 Nos.
Hand Sanitizer	1 No.	Butter Paper Sheet (9x12)	5 Nos.
Forensic Magnifier Lens	1 No.	Sticker Sheet A4	1 No.
Surgical Blade	1 No.	Temper Proof Tape	5 Nos.
Forceps	1 No.	Spatula	1 No.
Scissors	1 No.	12" Scale	1 No.
Pasteur Pipette / Dropper	2 Nos.	5' / 3 Mtr Measuring Scale	1 No.
Syringe	2 Nos.	Comb	2 Nos.
Ampule of Sterile Water	2 Nos.	Nail Cutter	1 No.

(Size A3- 2 Nos., A4- 5 Nos., A5 - 5 Nos.)



Identa





World Leader in
Forensic Products

Touch & Know

Identa Products
comes with 3 Years Shelf Life



Easy & Quick Steps to Use IDenta Detector

Test Preparation	1 Remove the Smart-Tip™ probe from test unit. 	2 Sample suspected substance or surface. (Not for use with plant materials.)			
		Powder Touch adhesive Smart-Tip™ to sample. Note: Sampler cannot test tablets. 	Trace Material Swipe the paper of the Smart-Tip™ probe across the suspect surface. 		
Test Preparation	3 Lock Smart-Tip™ probe into test unit. Press firmly. 	 Do not  continue unless probe is locked below the Flex Pins and cannot be removed from the test unit. A click sound will indicate the probe is locked.	Identification	4 With thumb and forefinger , squeeze chamber 1 until capsule breaks. 	5 Gently shake test unit for 2-3 seconds. 
Chamber 2 Identification	6 With thumb and forefinger , squeeze chamber 2 until capsule breaks. 	7 Gently shake test unit for 2-3 seconds. 			

Colour Reaction in the chamber will determine the outcome of the test

**The most accurate,
easy-to-use
explosive identification kit
on the professional market.**

IDenta Alert allows you to accurately identify suspected illegal substances, safe, quickly and easily. IDenta Alert series is the ideal tool for the law enforcement community. Using advanced, chemical technology, with fast and accurate results, IDenta Alert can help to detect explosives.

 **TNT/PETN, RDX/NITRATE**

 **UREA NITRATE**

 **AMMONIUM NITRATE**

 **TATP**

 **CHLORATE**

 **PERCHLORATE**

POST BLAST IDENTIFICATION





Explosive Detection Kit

Key product features of IDenta's new explosive detectors include:

1. The methodology provides a very safe testing method that will pose no danger at all to the user.
2. The detectors are able to detect the full range of the well-known types of military, commercial and the homemade explosives including:
 - ♦ TNT/PETN, RDX/NITRATE
 - ♦ UREA NITRATE
 - ♦ AMMONIUM NITRATE
 - ♦ NEW AMMONIUM NITRATE
 - ♦ TATP/HMTD
 - ♦ CHLORATE/BROMATE
 - ♦ PERCHLORATE
3. IDenta's new TATP/HMTD detector has consistently tested showing No False-Positives. The only novel reliable and stable kit for TATP on the market.
4. The detectors have at least two years period of chemical stability.
5. Durable, easy to use, self-contained plastic packaging will enable the products to be used in a wide-variety of field operations including in the field military operations as well as civilian applications.
6. The products are also expected to be very competitively priced.
7. High sensitivity to detect small amount.
8. The only kit that detects Urea Nitrate and Ammonium Nitrate

EXPLOSIVE DETECTORS (60 Test Kit)

Explosive detector should detect five types of following explosive categories.

• TNT / PETN / RDX / NITRATE	20 Test
• TATP / HMTD	10 Test
• CHLORATE / BROMATE	10 Test
• UREA NITRATE	10 Test
• AMMONIUM NITRATE	10 Test



Gun Shot Residue

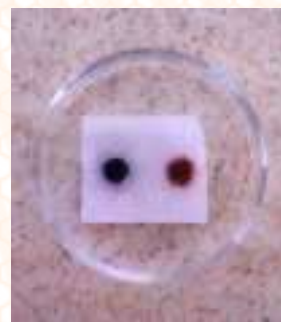
Presumptive, on the spot testing at crime scenes for trace amounts of residues of nitrates on a suspected shooter's hands. Trace detection can give valuable information as to whether or not an individual has recently fired a weapon.



Gun Shot Residue Particle Test Kit

This is a fast, reliable field test for detection of trace nitrates found in gunpowder. When a weapon is fired, gunpowder is blown back in the direction of the shooter and trace amounts of these residues are deposited on the shooter's firing hand. Developed in a simple-to-use pouch format, it can be deployed without any specialized training or equipment and results appear in seconds. Complete, easy-to-use.

Our Gunpowder Particle Detection Kit provides all of the chemical reagents and supplies required to perform a very sensitive test to detect and visualize the nitrites contained in these minute powder particles



Quantity: 10 case. The use of this kit allows your crime laboratory to perform a quick screen using AA and then, if warranted, a more definitive analysis by SEM.

The GSR-AA/SEM(C) is a combination kit.

Contents of Kit

- Tamper-evident, pre-sealed Kit Envelope, 6" x 9"
- Step-by-step Kit Instruction Sheet
- Gunshot Residue Analysis Information Form
- Pair of disposable Plastic Gloves
- 2" x 3" Ziplock Bag containing 12 cotton-tipped, plastic shaft swabs
- 3 ml dispenser containing a 5% Nitric Acid Solution
- Control Tube and cap
- Cartridge Case Tube and cap
- Right Back, Right Palm, Left Back and Left Palm Tubes and caps
- Right Back, Right Palm, Left Back and Left Palm Vials with caps containing SEM stubs covered with double-sided adhesive carbon tape
- Tamper-evident Police Evidence Seal for resealing kit after evidence collection

NARCOTIC DETECTORS (70 Test Kit)

- General Screening 10 tests
- Marijuana/Hashish 10 tests
- Barbiturates 10 tests
- Heroin Mix 10 tests
- Methamphetamine / Amphetamine 10 tests
- Cocaine / Crack 10 tests
- LSD 10 tests



**Pick & Choose
from 38 Tests
available**

AVAILABLE DETECTORS / TESTS

General Screening/Heroin	Mandelin
Marijuana/Hashish	Fentanyl
Barbiturates	Buphedrone
Methamphetamine / Amphetamine	Cyanide
Methamphetamine / Amphetamine Confirmation	Buprenorphine (Subutex)
Ecstasy (MDMA) / Bath Salt	Methadone
MDMA Precursors	Morphine
GBL	Paracetamol
Apaan	Flunitrazepam / Benzodiazepines
Cocaine / Crack	Mephedrone (4-Methyl-Meth-Cathinone)
Cocaine / Crack Confirmation	Synthetic Cannabinoids
LSD	Synthetic Cathinones
Ketamine Solid	Khat
Ketamine Liquid	Cannabis Traces
GHB	Opiates
PCP	Heroin Brown
Mandrax	Heroin White
Ephedrine	Heroin Black Tar
Acetic Anhydride	Heroin Mix

SNIFFER

Introducing IDenta's latest innovation : Handy Sniffer/Aero Chamber a first of a kind sniffer with the ability to carry out both drug and explosive screening and detection missions in a fast, effective and reliable manner. We have added a new type of probe to our CUSPER test kits which is designed for use with out AeroChamber, giving users the ability to screen and detect even the smallest traces of substances on any type of surface or object, and offering a very safe, practical and effective solution for screening people.

The AeroChamber is already in use of airports, on passenger aircrafts, ports, law enforcement and other government agencies worldwide.



Key Benefits:

- Versatile, able to screen for both drugs and explosives
- Small and portable. Does not require any set up time.
- Able to screen any surface size
- Perfect for screening people
- Highly reliable
- Cost effective
- Very easy to use
- No calibration needed

Comparison Chart to Electronic Sniffers	
ELECTRONIC SNIFFER	AeroChamber
Very Expensive	Highly cost effective
Requires long set up time (Calibration)	Very portable and ready to use
Easily contaminated	No contamination
False positives	Reliable
Separate sniffer for drugs and explosives	Good for both drugs and explosives
Cannot handle dirty samples	Able to screen any sample





If a person has contact with a metal object for a sufficient amount of time, metal ions may transfer from the object to the skin (or clothing). These ions will react with the Ferro Trace Detection Solution and fluoresce under ultraviolet (UV) light. The color of the fluorescence can indicate the type of metal contacted, and the pattern observed can indicate the general shape of the metal object. This technique is most often used in corroboration of an apparent self-inflicted gunshot wound. Other scenarios may produce contact with metal objects in which this technique may also be useful.

Kit Contents

Step 1 Reagent - 1 bottle 100 ml
Step 2 Reagent - 1 bottle 100 ml
Test Papers
Plastic Bags for Packing
Ruler for Photography
Permanent Marker Pen
Nitrile Gloves
Plastic Carry Case

Bullet Hole Identification



The identification of bullet holes and of marks produced by projectiles may be very important in the investigation of criminal cases involving the use of firearms. Such bullet-holes are usually characterized by the presence of metals (mainly lead and copper), originat in margins of these from the bullet's outer surfacehole alone can often, in the holes. The morphology of the lead to erroneous results.

Safety

- The BTK is safe for the operator, as there is no direct contact with the chemicals used in the test.
- All of the test reagents are contained within glass ampoules in specially designed protective plastic tubes.
- The test is performed by applying a few drops of reagents on Benchkote paper (plastic-backed filterpaper).

Compactness

The compactness, portability and self-sufficiency of the kit assures convenient transport and can be employed anywhere under a wide range of conditions.

Weight – 1030 gr. (41.2 oz.)
Width - 266 mm (10.4")
Length - 336 mm (13.1")
Height – 85 mm (3.33")

Shelf Life

The reagents in the kit form are stable for a long period of time (guaranteed for three years).

Proven Experience:

BTK – has been successfully used by the various police departments worldwide.

Advantages

- **Identification:** the BTK is capable of identifying bullet-holes caused by many types of bullets, namely lead, full metal jacket (FMJ), total metal jacket (TMJ) bullets, etc.
- **Direction:** if the colored imaging of the hole is circular or elliptical, it is often possible to assess the direction from which the bullet was fired.
- **Caliber:** The diameter of the projectile can be estimated from the diameter of the lead and the copper reactions color rings. The procedure does not preclude further laboratory analysis for shooting distance estimation, if required. It should be noted, however, that if a sample for primer discharge residue (PDR) particles from the hole margins is to be analyzed – such a sample should be collected prior to the use of the BTK, and it won't interfere with the BTK results.
- **Economical:** Each package contains 10 sets of kits, enabling one to examine scores of suspected holes.

Unequivocal Results

- There are no other known substances that react in the same colors.
- Test results, in case of positive identification, are characterized by the appearance of colored rings clearly visible on the white background of the test paper.
- The color produced reflects the shape of the hole while the area further away remains uncolored. It is therefore unnecessary to sample blanks.
- It is possible to identify bullet holes on many types of targets and the identification is not biased by personal judgment.

Simple Use, Rapid Results

- The test takes 3-4 minutes from the time of sampling until final results are obtained, enabling quick screening of large numbers of suspected bullet-holes.
- Several bullet-holes can be examined by one set of test tubes.
- The kit has been designed for simplicity of operation, and can be used at the scene of crime by any technician or non-scientific police officer with some basic training.
- The BTK kit is operated very simply and includes a delivery device in each tube for efficient use.

Objective

The identification of bullet-holes on various surfaces. Lead and copper are the main components of bullet cores and jackets. A chemical method can be applied for the detection of metals deposited by the bullet at the margin of the suspected bullet-hole.

BTK (Bullet-hole Testing Kit) – a portable laboratory for the rapid identification of bullet holes.

The BTK, with its sensitive, simple, rapid, precise and reliable operation, revolutionizes the field task of scene of crime units in the identification of bullet holes.

BTK enables simple, rapid and reliable identification of suspected bullet holes in the field.

Contents of Kit

- Instructions for use
- Forty crushable ampoules (10 sets of 4) protected by plastic mini tubes, filled with liquid reagents for the identification of bullet-holes
- Test papers
- Plastic bags for packing the positive test papers
- Ruler for photography and a permanent pen
- Technician report forms

Test Procedure



■ 4 plastic tubes - The solvents and reagents for lead and copper are sealed in small disposable plastic tubes.



■ A bullet hole in plywood



■ The test paper is wetted with the solvent for lead.



■ The test paper is then firmly pressed against the



■ The reagent for lead is applied to the test paper hole for about a minute.



■ A magenta colored ring at the hole's margins is indicative to bullet-holes.



■ Another test paper is now being wet with the solvent for copper. The test paper is then firmly pressed against the hole for about a minute. Then the reagent for copper is applied.



While photographs are useful, scale drawings of a crime scene can provide far more precise information pertaining to distances from objects in a room to the evidence and provide the judiciary with a bird's eye view of the crime scene.

Our plastic templates aid in these drawings by giving investigators correct proportion and uniformity in sketches.

There are 5 template options, ranging from traffic accident investigation to human figure sketching

Contents of Kit:-

- 1 - Clipboard with Drafter
- 1 - Graduated Removable Straight Edge
- 1 - Drafting Half Protractor
- 1 - Drafting Full Protractor
- 1 - Set Square
- 1 - Divider
- 1 - Bow Compass
- 1 - Drafting Set of Pencil
- 1 - Pack of Sketching Paper
- 1 - Supply Storage pouch
- 1 - Finger Print Template
- 1 - Traffic Accident Template
- 1 - House Furnishing Template
- 1 - Office Plan Template
- 1 - Crime Scene Template
- 1 - Human Figure Template
- 1 - Photo Evidence Numbers, 0 - 9
- 1 - Folding Photo Evidence Ruler
- 1 - Photo Numbers Booklet
- 1 - Roll of L Shape Adhesive Scale
- 1 - Vinyl Scale Set
- 1 - Small Rigid Adhesive Photo Scale Set
- 1 - Measuring Tape
- 1 - Magnetic Compass
- 1 - Digital Distance Measuring Device
- 1 - 5 mtr Steel Retractable Measuring Tape
- 1 - 100ft / 30 mtr Retractable Measuring Tape
- 1 - Steel Scale

1 - Customized Carrying Case



This Bullet Trajectory kit is designed to aid the investigating officers in determining the point of origin from where the weapon was fired.

Laser projection is an accurate method used to assist in determining projectile trajectories at crime scenes. When attached to a penetration rod which has been inserted into a bullet hole, the laser beam can help determine the direction and angle of the source or direction and angle of the projectile exit and possible impact sites.

Contents of the Kit: -

- 1- Half Protector
- 1- Full Protector
- 1- Colored String
- 1- Colored String Dispenser
- 1- Ballistic Angle Finder
- 1- Mitering Gauze
- 1- Tape Measure
- 1- ABFO Scale
- 1- Digital Inclinometer
- 1- Bubble Level Built In
- 1- Masking Tape
- 1- Multi Utility 21 Function Tool
- 1- Trajectory Rod Set
- 1- Centering Cone Set
- 1- Stringing Tip Set
- 1- Bullet Tip Set
- 1- Rod Connector Set
- 1- O-Ring Set
- 1- Tripod
- 1- Digital Vernier Caliper
- 1- Masking Tape
- 1- Plumb Bob and Line
- 1- Adhesive Rulers
- 1- Marking Pen
- 2- Laser Pointer (Red, Green)
- 1- Micrometer
- 1- Right Angle
- 1- Carrying Case



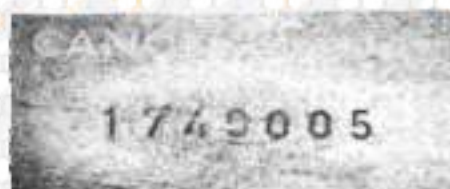


Advanced Laser Trajectory Kit

- | | |
|---|---|
| 1- Digital Angle Finder | 1- Photo Evidence Numbers Set (1 to 15) |
| 1- Ballistic Angle Finder | 1- ABFO Scale |
| 1- Miter Gauge | 1- Vinyl Photo Scale Set - 6" |
| 1- Digital Inclinometer | (Black, White, Transparent and Grey - 02 each) |
| 1- Digital Vernier Caliper | 1- Photo Id Marker / Book of Transfer Numbers |
| 1- Micrometer | with Evidence Labels |
| 1- Right Angle | 1- Masking Tape |
| 1- Plumb Bob and Line | 1- Wax Dots (Pack 50) |
| 1- Counter Balance Bottle (Plastic - 500ml) | 1- Multi Utility 21 Function Tool |
| 1- Trajectory Rods set | 1- Steel Measuring Tape (30 Mtr) |
| (4 - Penetrating, 4 - Photography) | 1- Tripod with Adaptor and Extension Rod |
| 1- Centering Cones, Rod Connectors, Stringing Tips, | 1- Evidence Marking Set |
| Bullet Tips, O-Rings Set | (Black, Blue, Green and Red - 2 each) |
| 1- Colored String / Thread Set | 3- Laser Pointer (Red, Green and Blue) |
| 1- Colored String / Thread Dispenser | 2- Protector Laser Mounting Plate |
| 1- Acrylic Photo Card | 1- Mounting Magnet |
| 1- White Plastic Sheet (Pack of 20) | 1- Silver Aluminum Briefcase Type Carrying Case |
| 1- Acrylic Evidence Marker Set | 1- Back Pack Bag with Customized Printing |
| (Orange and Yellow - 20 each) | |



(a)



(b)



Acid Etching - the acid reacts with the metal and produces hydrogen gas bubbles

Number Restoration Kit Contents

Set of Chemical for Aluminum	- 01 set
Set of Chemical for Copper	- 01 set
Set of Chemical for Steel	- 01 set
File - Bastard	- 02 nos
Pipettes, Disposable with Capillary and 3ml bulb	- 24 nos
Emory Papers	- 24 nos
Stirrers, Wood	- 12 nos
Cotton Balls	- 02 packet
Silicone Gun Set for Impression Evidence	- 01 set
Modeling Clay	- 01 packet
Molded Customized Carrying Case	- 01 no

Evidence Packing & Collection



Evidence Packing & Collection

TECHNOMAXX
Advance
Personal Protection Equipment Kit

PPE KITS
*Protection from
Bio Hazards / Droplets
Dust / Pollution
Contaminated Environment*

For
Forensic Expert
Police Personnel
Field Investigation Personals



Collect with
Safety &
Integrity

Evidence Packing & Collection



Sizes Available :
3"x6", 6"x9", 9"x12"
Customized Sizes & Printing Available

Pre Printed Evidence Envelopes

Preprinted with the pertinent information when collecting evidence and strong pre-gummed seal to ensure integrity.



Sizes Available :
3"x6", 6"x9", 9"x12"
Customized Sizes & Printing Available

Write Block Ziplock Bags

Pre Printed Transparent PVC zip lock Evidence Collection Bags



Sizes Available :
5"x3.5"x10",
7"x4.5"x14",
8"x5"x18"
Customized Sizes & Printing Available

Pre Printed Evidence Kraft Bags

Kraft Bag printed with a write-on area with a chain of custody section.



Sizes Available :
3"x6", 6"x9", 9"x12"
Customized Sizes & Printing Available

Integrity Bags

Temper Proof, Leak Proof, Evidence Collection Bags



Health Hazard Tape

High Quality Adhesive Tape with Pre Printed 'HEALTH HAZARD' Warning



Evidence Labels

Labels to mark/identify/record evidence type and other details required for investigation



Evidence Tags

Evidence Tags are printed in red on heavy paper stock and have eyelets and cotton thread to tie with evidence.



Temper Indicator Tape

Controls unauthorized interference with any package content, as an excellent visual theft deterrent. Clear security breached message on tape surface print residue left on sealed item.

Evidence Packing & Collection



Sizes Available :
10.5"x6.5"x4.5"
14"x11"x5.5"
18.5"x14.5"x15"
Customized Print & Size Available

Evidence Boxes

Corrugated Evidence Packing Boxes printed with a write-on area with a chain of custody section.



Sizes Available :
2" Rolls
Customized Printing
& Size Available

Evidence Packing Tapes

High Quality Adhesive Pre Printed 'EVIDENCE' sealing tape with Red Colour printing.



Bio Hazard Labels

High Quality Adhesive Pre Printed 'BIO HAZARD' Warning Labels



Bio Hazard Bags

Bio Hazard Bags to Store Toxic, Contaminated, Hazardous Materials with universal Bio Hazard Symbol printed on bag



Swab with Tube

Sterile swab with tubes are ideal to collect and immediately secure liquid evidences i.e. blood and other body fluids.



Swab Dryer

Swab drying rack are useful to assist while in course of examination / processing of swabs.



Evidence Flag

Provide an emboldened marking of the evidence at the crime scene.



Dead Body Bags

Bags to temporarily store and remove cadavers. Used at crime scene, accident and disaster

Evidence Packing & Collection



Evidence Collection Tubes

Perfect for storing all types of evidence with telescopic length extension keeping the tubes at the desired length.



Sterile Evidence Container

Used for the storage and transport of many liquids and solid materials. The screw top lid provides a secure seal.



Fire Tin

Metal can with transparent top for packing bullets, shell casing, soil samples and fragile items.



Sterile Swab

Sterile swab are ideal to collect liquid evidences i.e. blood and other body fluids



Jacket for Forensic Expert

Evidence Packing & Collection



Evidence Packing and Collection Kit

In order to preserve physical evidence in its original state, the crime scene must be protected and preserved as soon as possible. It is the responsibility of the first officer arriving on the scene of a crime to take steps to preserve and protect the area to the greatest extent possible.

This kit is excellent kit for crime scene search officers because the contents permit preliminary search with ultraviolet light for locating evidence such as fibers and stains. The kit includes all the necessary gears for collecting, marking and preserving all types of physical evidence. Instructions and procedures booklet included.

Contents of Kit :

01	3 Mtr Tape Measure	06	Amber & Transparent Plastic Jars with Caps
01	Rechargeable White LED Flashlight	06	Plastic Containers with Cap
02	Roll of Evidence Sealing Tape	01	Set of Thread, Needle, Sealing Wax & Clothe
20	Chain of Possession Labels	01	Set of Candle, Match Box
20	Bio Hazard Labels	01	Set of Crime Evidence Labels & Tags (50 each)
01	Set of Pre Printed Write Block Zip-Top Evidence Bags 4"x 6", 6"x10" & 9"x12" (20 each)	01	Ultraviolet Light with Batteries
01	Set of Pre Printed Evidence Envelope 5"x 7", 6"x9" & 9"x12" (20 each)	10	Big, Medium & Small - Evidence Collection Lifters
01	Set of Pre Printed Kraft Evidence Bags 5"x 3"x9", 7"x4"x13" & 8"x5"x18" (20 each)	02	Stainless Steel Scissors, Forceps & Spatula
01	Set of Pre Printed Evidence Box 10"x 6"x4", 18"x14"x14" & 13"x10"x05" (10 each)	01	Carbide Tipped Scriber
01	Set of Pre Printed Leak Proof Specimen Bags 4"x 6", 6"x10" & 9"x12" (20 each)	01	Multi Tool (21 Function)
01	Set of Bio Hazard Bags 8"x 12" (Pack of 20)	01	Pocket Knife
01	Set of Fire Tin for Bullet Small & Big (10 each)	01	Marker, Black, Blue, Green, Red & White
06	Collection Tubes with EDTA	04	Liquid Sampling Pipettes
06	Disposable Syringes	01	3" Dia Round Magnifying Glass
		01	Probe with Paint Chip Cutter
		06	Disposable Latex Glove Pairs, Face Mask, Shoe Cover & Head Cover
		01	Plastic Molded Customized Carrying Case

General Investigation Kit

General Crime Scene Investigation Kit

Contents of Kit :

Item Description	Quantity
Spray Marking Paint	- 01 no
Crime Scene Barrier Tape with Rewinder 50 Mtr	- 01 no
Laser Distance Measuring Device	- 01 no
Direction Compass	- 01 no
Elimination Kit (Pad & Slips)	- 01 no
Wooden Folding Scale	- 01 no
Vinyl Scale 6" (black, white, grey & transparent)	- 01 no
ABFO Scale Plastic	- 01 no
Self Adhesive Mini Scale 20mm (150 nos)	- 01 Roll
White 12 LED Hi Power Torch (800 lumens)	- 01 no
Pocket Folding Knife	- 01 no
Swiss Knife 21 Functions	- 01 no
Magnifier (4" Dia)	- 01 no
Vernier Gauge (Digital)	- 01 no
Scissors with Plastic Handle	- 01 no
Small Metal Search Mirror	- 01 no
Magnet Pick Tool (Pen Type)	- 01 no
Set of Forceps	- 01 no
Tool File	- 01 no
Rubber Gloves (pack of 2 pairs)	- 01 no
Nitrile Gloves (pack of 5 pairs)	- 01 no
Assorted Evidence Labels (pack of 50)	- 01 no
Molded Plastic Evidence Containers	- 01 no
Set of Evidence Bags	- 01 no
Book of Transfer Numbers	- 01 no
Set of Permanent Markers Pens (4 colors)	- 01 no
Soap and Towel	- 01 no
Dust Mask, Shoe Cover & Head Covers	- 10 each
Steel Measuring Tape- 5mtr	- 01 no
Glass Cutter	- 01 no
Ratchet Screwdriver with Assorted Heads	- 01 no
Electric Test Master Screwdriver	- 01 no
Junior Hacksaw	- 01 no
Pliers	- 01 no
Wire Cutter	- 01 no
JUMBO TROLLEY CARRYING CASE	- 01 no



Arson Investigation



Conveniently packaged in a heavy-duty metal box, this complete tool kit provides essential support for arson investigation crime scenes. Power and/or manual drilling, cutting and chiseling tools allow for the extrication of even the most difficult to obtain evidence. Protective gloves and disposable clothing are also included.

Hydrocarbon Gas Detector

Hydrocarbon / gas detector, used for detecting most combustible gas or vapors at suspected arson and fire scenes. It detects Acetylene, Methyl Chloride, Iso-butane, Hydro-sulfide, Acetone, Ethane, Methanol, Propane, Ammonia, Ethylene, Gasoline, Hydrogen, Chlorine, Methyl Ether, Vinyl Chloride



Hydro Carbon Detector	- 01 No
Heavy-Duty Sledge - Mallet	- 01 No
Hammerhead Hatchet	- 01 No
Collapsible - Folding Steel Shovel	- 01 No
Heavy-Duty Rubber Gloves, Pair	- 01 No
Pair of Safety Goggles	- 01 No
Disposable Jumpsuits	- 01 No
5" Wire Cutter Pliers	- 01 No
8" Scraper/Putty Knife	- 01 No
11" Screwdriver	- 01 No
7" Screwdriver	- 01 No
8" Phillips Screwdriver	- 01 No
Claw Hammer	- 01 No
Small All-Purpose Hack Saw	- 01 No
Rechargeable Drill machine with assorted bits	- 01 No
Heavy-Duty Masonry Chisel	- 01 No
Wood Chisel	- 01 No
6" Regular Pliers	- 01 No
Blade Trowel	- 01 No
Metal Tray, Heavy Duty Carrying Case	- 01 No

CRIME SCENE CORDONING



After a crime scene has been discovered, measures must be taken to secure and protect the scene from contamination. To maintain the integrity of the scene, law enforcement must take action to block off the surrounding area.

Crime Scene Cordoning



Crime Scene Cordoning / Protection Kit

- Crime Scene Cordoning Foldable Plastic Barrier Post with Metal Base Stand.
- Crime Scene Cordoning Barrier Tape with Rewinder
- Rechargeable Flashers
- Crime Scene Marking Flags
- Crime Scene Marking Pyramid Markers (Alpha/Numeric)
- Crime Scene Marking Cones (Evidence)
- Flexi Carrying Bag

IO KIT

Everything an investigator's team needs to locate, collect, process and package evidence at the scene.

We like to consider it a culmination of our finest products. This kit give you the tools to attack any crimescene you may encounter. Comes in multiple cases / bags which makes this kit easily transportable.

S. No Item Description

Narcotic Detection Detectors	04 Test
Blood Stain Detection Tablets	04 Test
Semen Stain Detection Test	04 Test
DLK for Foot Print Lifting	01 no
Illuminated Magnifier	01 no
Ratchet Screwdriver Set with Assorted Heads	01 no
Set of Forceps	01 no
Dust Mask, Shoe & Head Cover	05 each
Heavy Duty Pliers	01 no
Small Hammer	01 no
Crime Scene Barrier Tape with Rewinder 50 mtr	01 no
Crime Scene Barrier Post with Metal Stand	06 nos
Crime Scene Flasher	04 nos
Body Bags (Brown / Black)	02 nos
Chalk & Powder for Marking (White & Yellow)	02 Kg
Crime Scene Marking Spray (Red & Yellow)	02 each
Clipboard, Drawing Sheets (Pack of 20)	01 each
Set of Drawing Instruments	01 no

Crime Scene Sketch Template	01 no
Set of Fingerprint, Traffic, House Plan, Crime Scene & Human Figure	
Scissor with plastic handle, two sizes	02 no
Lock & Adhesive Paper Seal (100 Pieces each)	04 Sets
Swiss Knife (21 Blade)	01
Evidence Flags (Set of 10)	02 Sets
Evidence Numbers 1 to 10 and A to Z	02 Sets
Assorted Evidence Zipper Bags - 3 different sizes	04 Set
Evidence collection lifters (having 10 piece each)	20 Set
Vials with paper adhesive (100ml & 50 ml vials)	50 each
Disposable Latex Gloves	10 Pairs
Plastic Container with Cap (assorted sizes)	05 Set
Torch (Chargeable) with 3 Volt LED	01 no
Measurement Tape (15 Mtr.)	01 No
Direction Compass	01 No

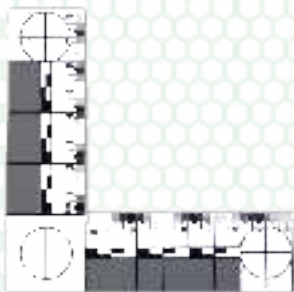
ALL IN A SET OF :

BIG MOLDED PROFESSIONAL CARRYING CASE
SMALL ALUMINUM FIELD CARRYING CASE
FLEXIBLE BAG

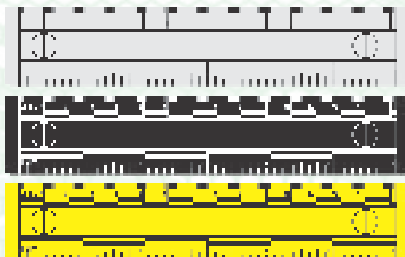
S. No Item Description



Crime Scene Rulers & Markers



L Shaped Photographic Scale



Vinyl Rulers



Folding Rulers



Adhesive Scales



Mini Adhesive Scale



L Shape Adhesive Scales



Blood Stain Template



Digital Distance Measuring



Photo Markers



Book of Transfer No.



Pyramid Evidence Marker



Photo Evidence Tent Marker

Photo Documentation Kit



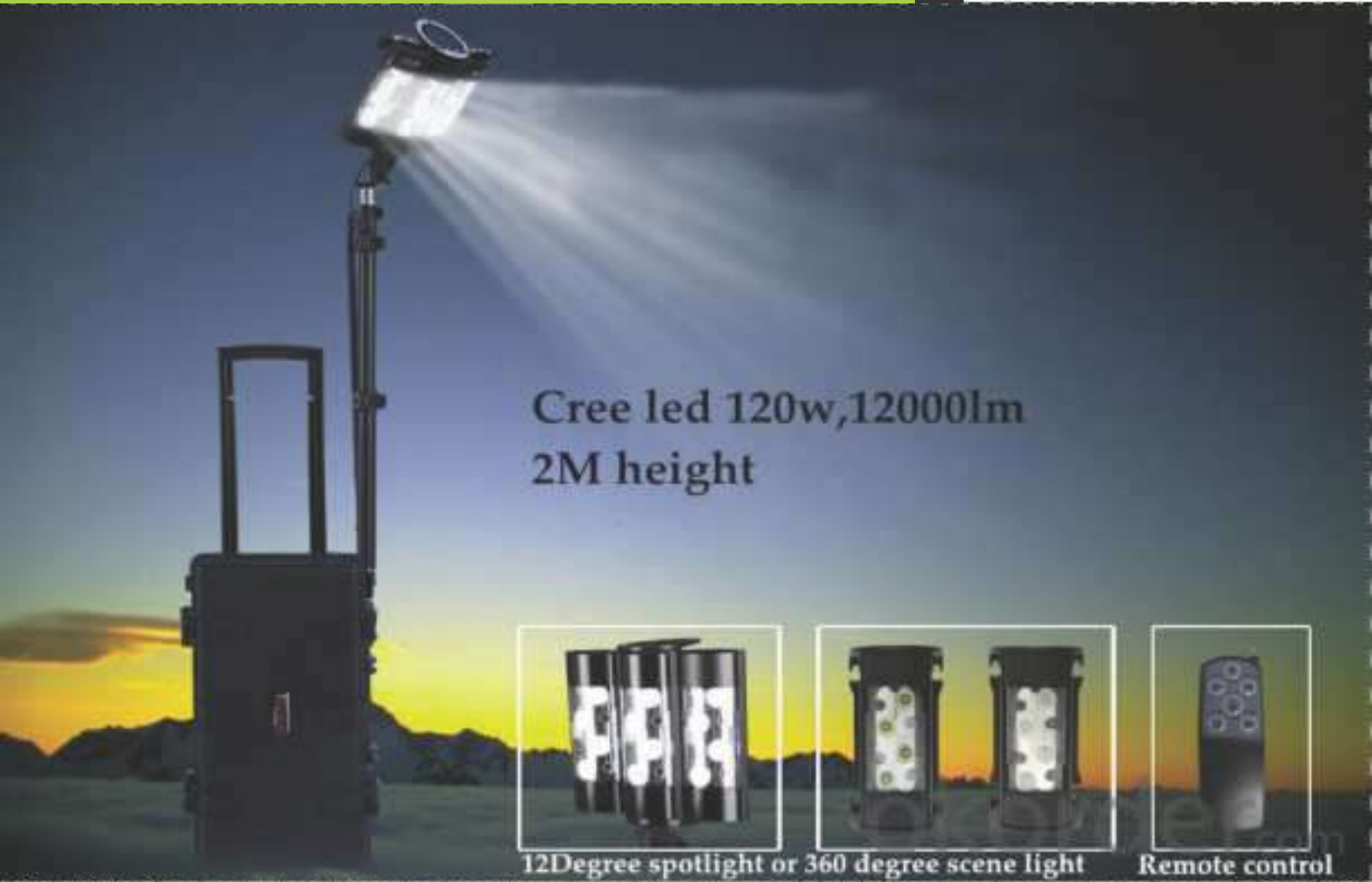
Any Photo taken of evidence found at the crime scene that will eventually be compared to non samples from suspects must include a scale. Given the diverse nature of crime scene and types of evidences that may be encountered, we have provided the widest, most complete line of scale to fit virtually any situation.

You are certain to find the necessary tools to mark, identify and measure evidence for photographic records enable accurate information regarding the crime scene.

Contents of Kit

- Photo Evidence Numbers
- Photo Evidence Markers (Cones)
- Tent Type Card Sheet Evidence Numbers
- Photo Evidence Rulers
- Book of Transfer Numbers
- Evidence Pyramid Marker
- Rigid Photo Scale
- Blood Stain Template
- ABFO Scale
- Vinyl Scale
- Digital Distance Measuring Device
- Retractable Measuring Tape
- Adhesive Rulers
- L Shape Adhesive Rulers
- Roll of 20mm Adhesive Ruler
- Folding Scale
- Moulded Carrying Case

Illumination Systems



This portable remote light system comes with 12 Degree spot light or 360 Degree scene light. It has 120 Watt CREE LED super bright lamps. This whole unit comes with one light tower in a compact and rugged carrying case.

- Comes with convenient low battery warning system and waterproof activation switch.
- Digital Display will show the percentage of remaining power.
- 12 Degree spotlight or 360 degree scene light
- CREE 120WLED super bright
- Remote - control switch
- High / Middle / Low strobe / switch

Model	- 120 W
Bulb Type	- CREE T6 10W* 12 pcs
Brightness	- 12,000 Lm
Capacity	- Sealed 24Ah
Working Time	- 20H (Low), 3 H (High)
Charging Time	- 8-10 Hrs.
Mass Height Extended	- 78.5" (2m)



Rechargeable Search Light



MODEL NO. KB2046-F6



10 Watt LED Light - 6 Mode

Rechargeable 10 Watt LED Spotlight with Blinking Light

- 10W High Power CREE LED
- 6 modes output
(High, Medium, Low, SOS, Flash and Blinker)
- Adjustable handle with three positions and swivel adjustable stand.
- Rechargeable Battery packs (4800 mAh / 9600 mAh / 14400 mAh)
- Dual Rechargeable AC and 12V DC Car Charger
- 3 Color LED Indications : Low/30%, Full, Charging
- Runtime : (14400 mAh battery pack)
- High Power - 5 hrs
- Medium Power - 7 hrs
- Low Power - 25 hrs
- SOS signal - 12 hrs
- Strobe / blinking - 10 hrs
- Orange Blinker - 72 hrs

- 6 Outputs:**
- High Mode
 - Medium mode
 - Low Mode
 - SOS
 - Strobe / Blinking
 - Orange Blinker

LED:	10W CREE			Battery:	Li-ion	
High	4h	850 lumens	470m	Size:	226 x 165 x 179mm	
Low	12h	280 lumens	280m	Weight:	1000g	
Blinking	140h	14 lumens				

20 Watt LED Spotlight

- Super bright 20 Watt LED spotlight
- Blinking light
- Swivel stand
- Shoulder strap included
- USB power bank
- Dual recharge : AC/DC charger
12V DC car plug charger (both included)

LED:	20W CREE			Battery:	Li-ion (6600mAh)	
Spotlight	4h	1600 lumens	500m	Size:	226 x 165 x 179mm	
Blinking	160h	14 lumens		Weight:	930g	
USB:	DC 5V 1000mA					

100



- Crime Scene Cordoning & Marking
- Crime Scene Drawing & Measurements
- Crime Scene Photography Rulers & Markers
- DNA /General Evidence Collections & Packing
- Fingerprint Investigation
- Footprint Investigation
- Blood stain / Murder Investigation
- Semen stain / Rape Investigation
- Explosive Detection
- Narcotics Detection
- Bullet Hole and Gunshot Investigation
- Expert Protective Material

Contents of the Kit: -

Finger Print Investigation

1. Palm & Finger Print Taking Inkless Pad 6" x8"	01 no
2. Fingerprint Taking Card Holder	01 no
2. Finger Print Normal Powders (Black, White , Silver Grey & Dual Use)	50 gm each
3. Finger Print Fluorescent Powders (Orange, Green & Yellow)	50 gm each
4. Finger Print Magnetic Powders (Black, Silver Grey & Dual Use)	50 gm each
5. Finger Print Fluorescent Magnetic Powders (Orange &Yellow)	50 gm each
6. Finger Print Feather Brushes (Marabou White, Marabou Black & Ostrich)	02 each
7. Fingerprint Fiber Glass Filament Brush	01 no
7. Finger Print Magnetic Applicator (Retractable & Multi Sleeve)	01 each
8. Finger Print Lifting Tape 1"x360", 2" x 360" & 4"x360"	01 each
9. Finger Print Scaled Lifters (Black, White & Transparent) 5cm x 10 cm	24 each
10. Finger Print Backing Cards (Black & White)	24 each
12. Latent Iodine Print Process with Fixative	01 set

Crime Scene Visual Aids

13. Magnifier Illuminated Round White LED 3x	01 no
14. Magnifier Illuminated Round White LED 8x Scaled	01 no
15. Magnifier Illuminated Round White LED 10x	01 no
16. Magnifier Illuminated Folding White LED 5x	01 no

Crime Scene Photography Rulers & Markers

18. Wooden Folding Scale 2Mtr	01 no
19. Rigid Photo Scales - Black, White & Grey	12 each
20. Adhesive ABFO Scale - Roll of 50	01 no
21. Vinyl Ruler 6" Set of Black, White, Grey & Transparent	05 each
22. Photo ID Marker Book / Book of Transfer Numbers	01 no
23. Crime Scene Evidence Pyramid & Cones	04 nos

Crime Scene Scientific Investigation Material

24. Blood Stain Detection Tablets	08 nos
25. Semen Stain Detection PSA Test	08 nos
26. General Screening Explosive Detector	08 nos
27. General Screening Narcotic Detector	08 nos
28. Bullet Hole Detectors (Lead & Copper)	04 each
29. Silicon Extruder Gun Kit with 50 ml cartridge	01 no
30. Set of Foot Print Impression Material (Casting & Electrostatic)	01 no
31. Hydro Carbon Detector	01 no

Crime Scene Protection / Cordoning Material

32. Crime Scene Cordoning Foldable Plastic Barrier Post with Base Plate	04 nos
33. Crime Scene Do Not Enter" Barrier Tape 75mm x 50 mtr with rewinder	01 no
34. Crime Scene Flasher	04 nos

Crime Scene Drawing Material

35. Clipboard, Drawing Sheets (Pack of 20), Set of Drawing Instruments	01 no
36. Crime Scene Sketch Templates (Fingerprint, Traffic, House Plan, Office Plan, Crime Scene & Human Figure)	01 no

Techno Portable Lab

Crime Scene Weighing & Measurement Material

37. Digital Weighing Machine	01 no
38. Digital Distance Measuring Device	01 no
39. Measuring Tape 5Mtr	01 no
40. Vernier Gauge - Digital	01 no

Crime Scene Illumination Material

41. Small Battery Operated UV Light	01 no
42. Rechargeable White LED Torch	01 no
43. Crime Scene Lamp Kit (Rechargeable LED Lamps - UV, Blue & White)	01 set

DNA Evidence Collection

44. Mini FTA Cards (2 Source - Pack of 25)	01 pack
--	---------

Crime Scene Evidence Collection & Packing Material

45. Pre Printed Evidence Envelopes (3.5"x6.5", 6"x9" & 9"x12")	10 each
46. Pre Printed Kraft Evidence Bags (5"x3 1/8"x9 7/8" & 7"x4 1/2"x13 3/4")	10 each
47. Write Block Zip-Top Evidence Bags (3"x6", 6"x10" & 10"x12")	10 each
48. Integrity Evidence Bags (4"x7.5, 7"x10.5" & 9"x12)	10 each
49. Pack of Biohazard Labels & Bags (20 Each)	01 pack
50. Sterile Evidence Containers 50ml & 100ml	10 each
51. Autoclavable Storage Vials with Cap - 5ml	10 nos
52. Fire Tins for Bullets (two sizes)	04 each
53. Roll of Evidence Sealing Tape	01 roll
54. Roll of Health Hazard Tape	01 roll
55. Set of Packing Cloth, Thread, Needle & Sealing Wax	01 set
56. Chain of Custody Labels - Pack of 24	01 pack
57. Crime Evidence Labels - Pack of 24	01 no
58. Sterile Disposable Plastic Pipettes with 3ml Bulb - Pack of 12	01 pack
59. Sterile Cotton Swabs and Swab Drying Rack - Pack of 24	01 pack
60. EDTA Tubes 10ml- Pack of 12	01 pack

Crime Scene General Investigation Tools

61. Direction Compass	01 no
62. Thermometer	01 no
63. Multi Function Tool - 21 Functions	01 no
64. Stainless Steel - Scissors, Tweezer, Scalpel	01 each
65. Magnet Pick Tool	01 no
66. Tool File	01 no
67. Probe with Paint Chip Cutter	01 no
68. Glass Cutter	01 no
69. Ratchet Screwdriver with Assorted Heads	01 no
70. Electric Test Master Screwdriver	01 no
71. Junior Hacksaw	01 no
72. Heavy Duty Pliers	01 no
73. Wire Cutter	01 no

IO Protection Material

74. Gloves - Rubber & Cotton	02 each
75. Latex Disposable & Nitrile Gloves	05 pairs
76. Dust Mask, Shoe Cover & Head Covers	05 each
77. Set of Permanent Markers Pens - Four Colour	02 each

78. Molded Jumbo Trolley Type Carrying Case

01 no

79. Aluminum Briefcase Type Carrying Case

01 no

Kit Carrying Cases



Kit Carrying Cases



Size (in mm)
370x190x185
420x220x195
455x245x210



Size (in mm)
450x230x220
515x275x270



Size (in mm)
450x230x155
450x230x220
515x275x270
710x313x192



Size (in mm)
420x215x195
495x240x255



Size (in mm)
480x250x260



Size (in mm)
360x323x145



Size (in mm)
380x310x60

Kit Carrying Cases



Jumbo Kits



Size (in mm)
460x280x635



Size (in mm)
480x315x820

Mobile Forensic Vehicle



Blood Detection
Gun Shot Detection
Finger Print
Semen Detection
Bullet Trajectory
Explosive Detection
Crime Scene Sketch
Evidence Preservation & Collection
Narcotic Detection
Bullet Hole Testing
Foot & Tire Casting
Forensic Light Source
General Crime Scene Investigation
Arson Investigation

Investigate any CRIME
with our
Mobile Forensic Vehicle

Call or E-mail
for Customized
Proposal



**TECHNOMAXX
FORENSICS**

YOUR PARTNER IN CRIME SCENE INVESTIGATION


Mobile Forensic Van



**TECHNOMAXX
FORENSICS**

YOUR PARTNER IN CRIME SCENE INVESTIGATION

Mobile Forensic Vehicle Kits



Complete Finger Print Taking Kit.
Latent Finger Print Developer Kit.
Foot & Tire Print Casting Kit.
Electrostatic Dust Mark Lifting Kit.
Forensic Light Source.
Blood Detection Kit.
Semen Detection Kit.
Narcotic Detection Kit.
Explosive Detection Kit.
Gun Shot Residue Kit.
Bullet Hole Testing Kit.
Ferro Trace Detection Kit.

Bullet Trajectory Kit.
Evidence Packing & Collection Kit.
General Investigation Kit.
SOC Sketch and Measuring Kit.
Impression Evidence Kit (Silicone).
Arson Investigation Kit.
DNA / Sexual Assault Collection Kit.
Set of Magnifiers.
Crime Scene Cordoning Kit.
Crime Scene Illumination System.
Search Light.

TECHNOMAXX FORENSICS PVT. LTD.



GST



BANKER



IEC



NSIC



ISO



MSME

We support
Make In India

At a Glance..



CRIME SCENE DO NOT ENTER



TECHNOMAXX FORENSICS

TECHNOMAXX FORENSICS PVT. LTD.

ISO 9001: 2015 Certified

2-K/4, N.I.T. Faridabad - 121001

Ph. 0129-4029801 Mob. : 9818586001, 9811508585

E-mail : info@technomaxx.com Web : www.technomaxx.com



to reach us type
TECHNOMAXX
in Google Maps



[TechnomaxxIndia](https://www.facebook.com/TechnomaxxIndia)



[TechnomaxxIndia](https://twitter.com/TechnomaxxIndia)